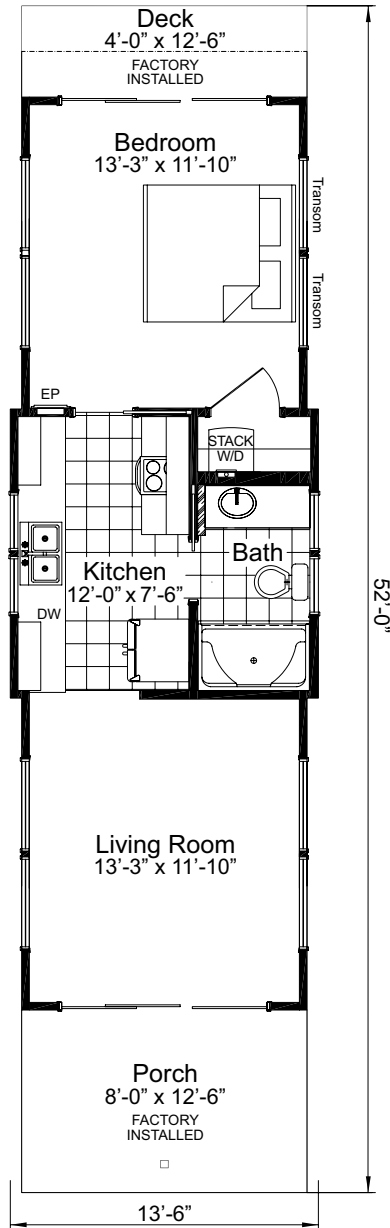




www.palmharbor.com



THE OSPREY



The Osprey

Total: Approx. 513 Sq. Ft.

- 1 bedroom, 1 bath
- Large great room
- Efficient galley kitchen
- Integrated decks
- Covered porch

Copyright © 2010, Palm Harbor Homes, Inc. Because Palm Harbor Homes has a continuous product updating and improvement process, prices, plans, dimensions, features, materials, specifications and availability are subject to change without notice or obligation. Please refer to working drawings for actual dimensions. Renderings and floor plans are artist's depictions only and may vary from the completed home. Square footage calculations and room dimensions are approximate subject to industry standards.



Rev. 01/10

