

The American Dream Homes


These Homes Available From Our Pacific Northwest Division



Copyright © 2012, Palm Harbor Homes, Inc.

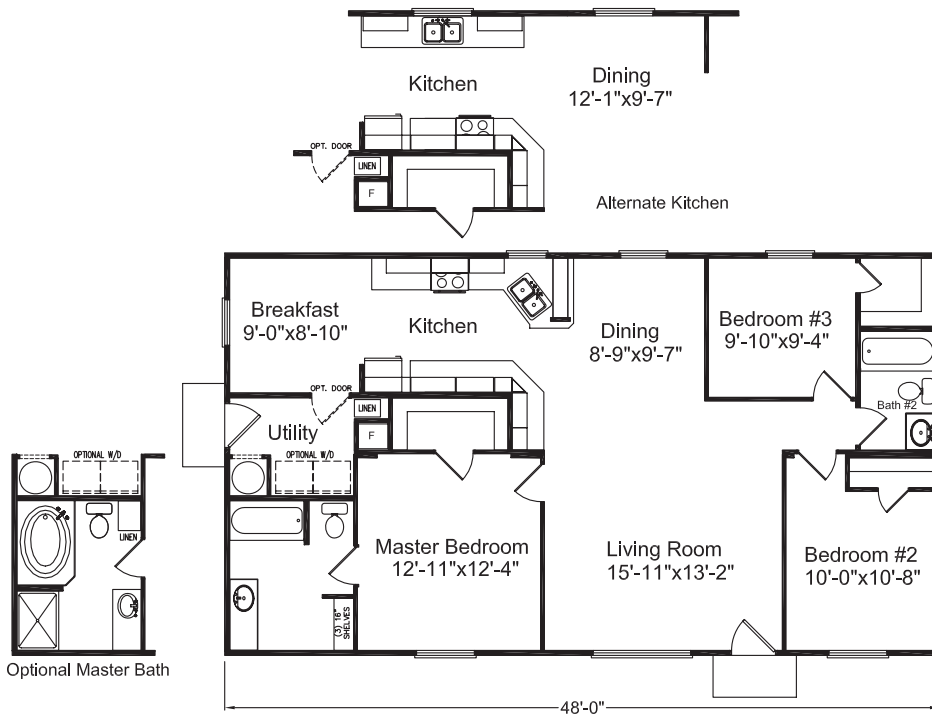
BUILT BY: Palm Harbor Homes
3737 Palm Harbor Drive, Millersburg, OR 97321

CONTACT: **800-928-2083** Forrest Barnes or
the Sales Department

Rev. 10/12 

**YOUR DREAM
PRICE**
ON YOUR DREAM HOME

The American Dream

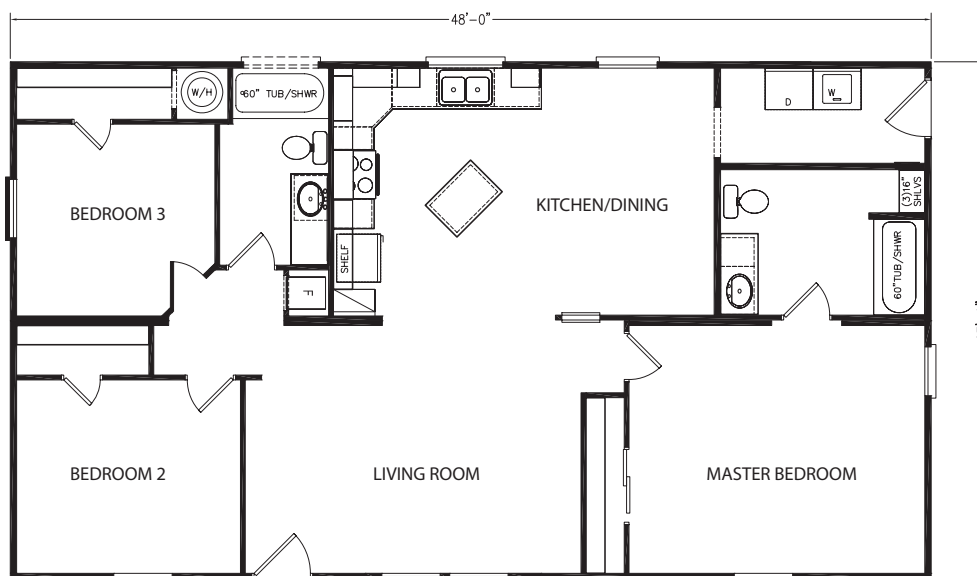


The American Dream Model 4P348AF

Approx. 1,296 Sq. Ft.
27' x 48'
3 Bedrooms, 2 Baths

- Large Living Area
- Two Dining Areas
- American Dream Exterior
- 8'6" Tall Ceilings
- Abundant Natural Light

The American Dream II



The American Dream II Model 4P48F09

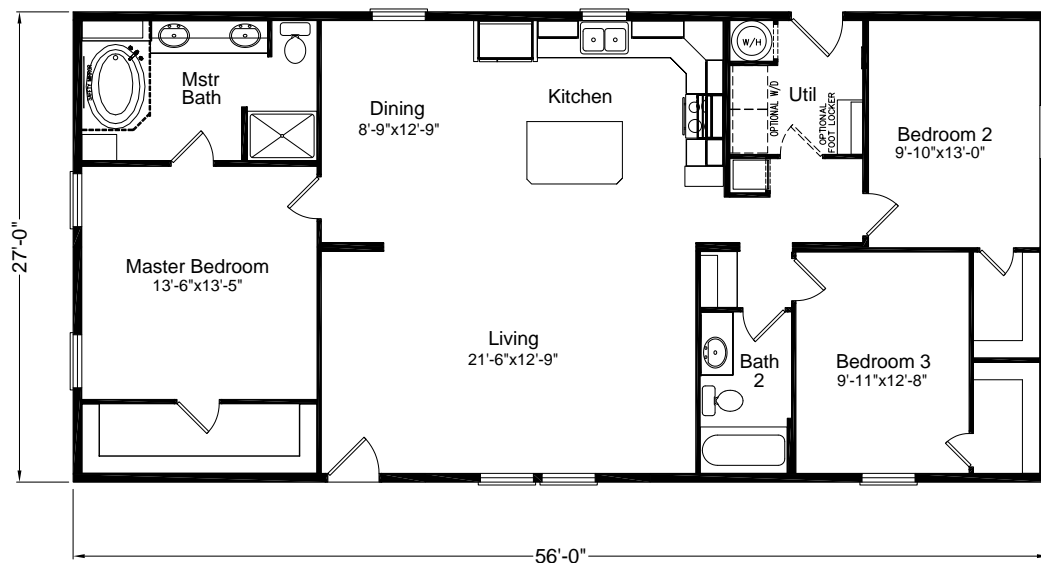
Approx. 1,296 Sq. Ft.
27' x 48'
3 Bedrooms, 2 Baths

- Large Living Area
- Large Bedrooms
- American Dream Exterior
- 8'6" Tall Ceilings
- American Dream Kitchen Island

**YOUR DREAM PRICE
ON YOUR DREAM HOME**

Copyright © 2012, Palm Harbor Homes, Inc. Because Palm Harbor Homes has a continuous product updating and improvement process, prices, plans, dimensions, features, materials, specifications and availability are subject to change without notice or obligation. Please refer to working drawings for actual dimensions. Renderings and floor plans are artist's depictions only and may vary from the completed home. Square footage calculations and room dimensions are approximate subject to industry standards.

The American Dream III

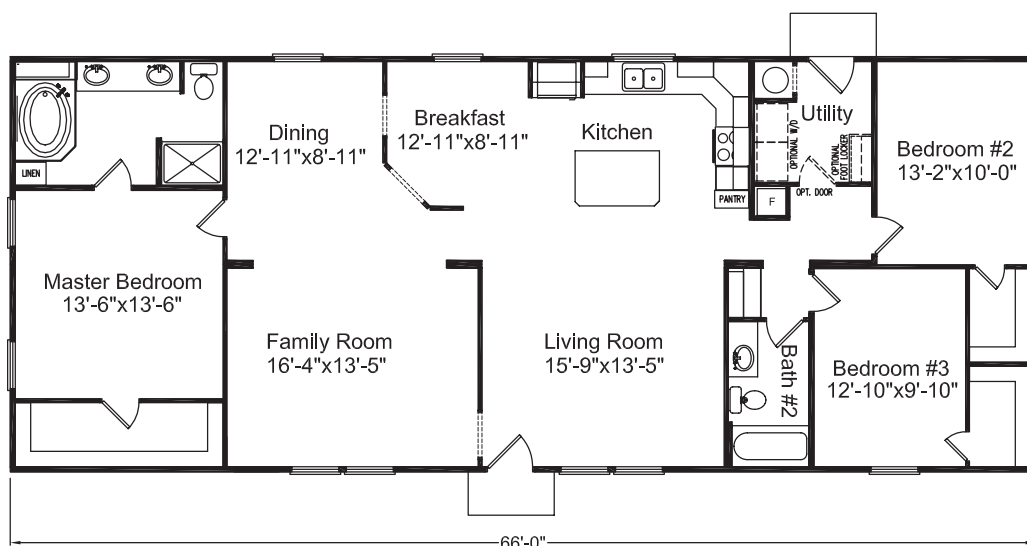


The American Dream III Model 4P356H9

Approx. 1,512 Sq. Ft.
27' x 56'
3 Bedrooms, 2 Baths

- Large Living Area
- Walk-in Closets in All Bedrooms
- American Dream Exterior
- American Dream Master Bath
- American Dream Kitchen Island

The American Dream IV



The American Dream IV Model 4P366F5

Approx. 1,782 Sq. Ft.
27' x 66'
3 Bedrooms, 2 Baths

- Two Living Areas
- Two Dining Areas
- Walk-in Closets in All Bedrooms
- American Dream Exterior
- American Dream Master Bath
- American Dream Kitchen Island

**YOUR DREAM PRICE
ON YOUR DREAM HOME**

Copyright © 2012, Palm Harbor Homes, Inc. Because Palm Harbor Homes has a continuous product updating and improvement process, prices, plans, dimensions, features, materials, specifications and availability are subject to change without notice or obligation. Please refer to working drawings for actual dimensions. Renderings and floor plans are artist's depictions only and may vary from the completed home. Square footage calculations and room dimensions are approximate subject to industry standards.

The American Dream Order Form

Standard Features

- American Dream Exterior
- 8'6" Tall Ceilings
- 42" Kitchen Overhead Cabinets

- 30# Roof 11" Eaves
- 2x6 Exterior Walls
- Oriented Strand Board (OSB) flooring
- R-25 / R-21/ R-22 Insulation
- 36" Steel Front and Rear Doors
- 18' Frost Free Refrigerator
- Refrigerator Surround
- Water Heater Storage Rack
- 8'6" Ceilings Throughout
- Recessed Lighting in Kitchen
- Upgrade Interior Painted w/Accent Walls
- 40 Gallon Electric Water Heater
- Whole-house Water Shut-off Valve
- 8" Ceramic Tile Backsplash
- Decorative Accent Tile in Range Area
- Vinyl Low E Windows
- Customized Exterior Paint Selections
- Ceiling Lights in Bedrooms
- Upgraded Seamless Cabinets Throughout
- Moen Faucets
- China Sinks in Bathrooms
- Stainless Steel Sink
- Shut-off Valves at Fixtures
- 6 Panel Interior Doors

Options

Exterior

- Hose Bibbs
- Set Back Frame
- Nine Light Rear Door
- Painted Exterior Door
- 40 lb Roof Load w/Eaves

Energy

- R40 Ceiling Insulation
- Energy Star Pkg. – includes R40/R21/R38

Decor

- Upgraded Carpet
- Entry Floor Vinyl
- 2" Plantation Blinds

Interior

- Add Utility Door
- HD Laminate Tops Throughout

Kitchen/Appliance

- Dishwasher
- 50 Gallon Electric Water Heater
- Appliance Package 1

Electrical

- Wire/Brace for Fan
- Phone Boxes
- TV Boxes

Baths

- Single Pull Faucets
- Upgrade Glamour Bath 48AF

Other

- Gas Conversion Package
- Foot Locker
-
-

Base Price

Options Total

Total Price with Options

Millersburg, OR (20)

Rev. 10/12 



I have read and understand these standard specifications and pricing as shown.

SIGNATURE

DATE

* Price includes normal block and level on your prepared site, carpet installation and Factory Gold Key Care trim out service. Delivery fees and site improvements vary by site and are an additional cost. Specifications and pricing is subject to change without notice. These specifications are general only and may vary depending on floor plan and options chosen.

YOUR DREAM PRICE ON YOUR DREAM HOME



Copyright © 2012, Palm Harbor Homes, Inc.

The American Dream Model 4P348AF

Approx. 1,296 Sq. Ft., 27' x 48'
3 Bedrooms, 2 Baths

The American Dream III Model 4P356H9

Approx. 1,512 Sq. Ft., 27' x 56'
3 Bedrooms, 2 Baths

The American Dream II Model 4P48F09

Approx. 1,296 Sq. Ft., 27' x 48'
3 Bedrooms, 2 Baths

The American Dream IV Model 4P366F5

Approx. 1,782 Sq. Ft., 27' x 66'
3 Bedrooms, 2 Baths

Copyright © 2012, Palm Harbor Homes, Inc. Because Palm Harbor Homes has a continuous product updating and improvement process, prices, plans, dimensions, features, materials, specifications and availability are subject to change without notice or obligation. Please refer to working drawings for actual dimensions. Renderings and floor plans are artist's depictions only and may vary from the completed home. Square footage calculations and room dimensions are approximate subject to industry standards.

BUILT BY: Palm Harbor Homes
3737 Palm Harbor Drive, Millersburg, OR 97321

CONTACT: **800-928-2083** Forrest Barnes or
the Sales Department

Rev. 10/12 

**YOUR
DREAM
PRICE**
ON YOUR DREAM HOME

