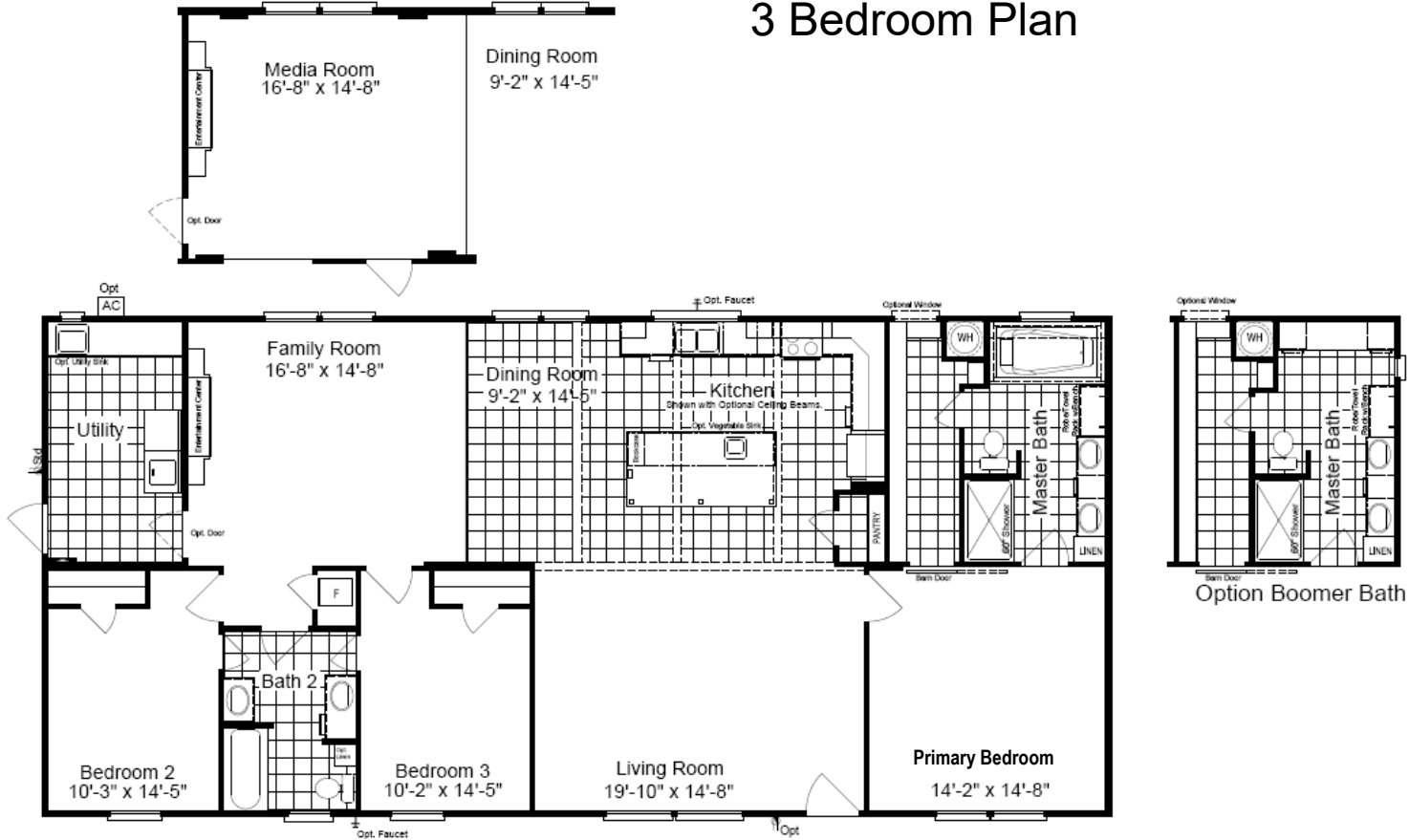


The Benbrook 64

3 Bedroom Plan



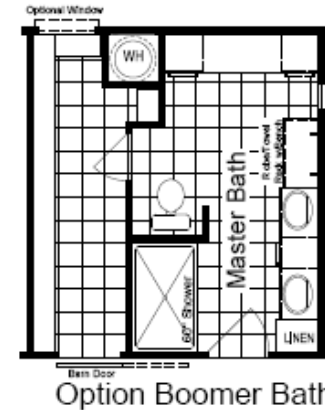
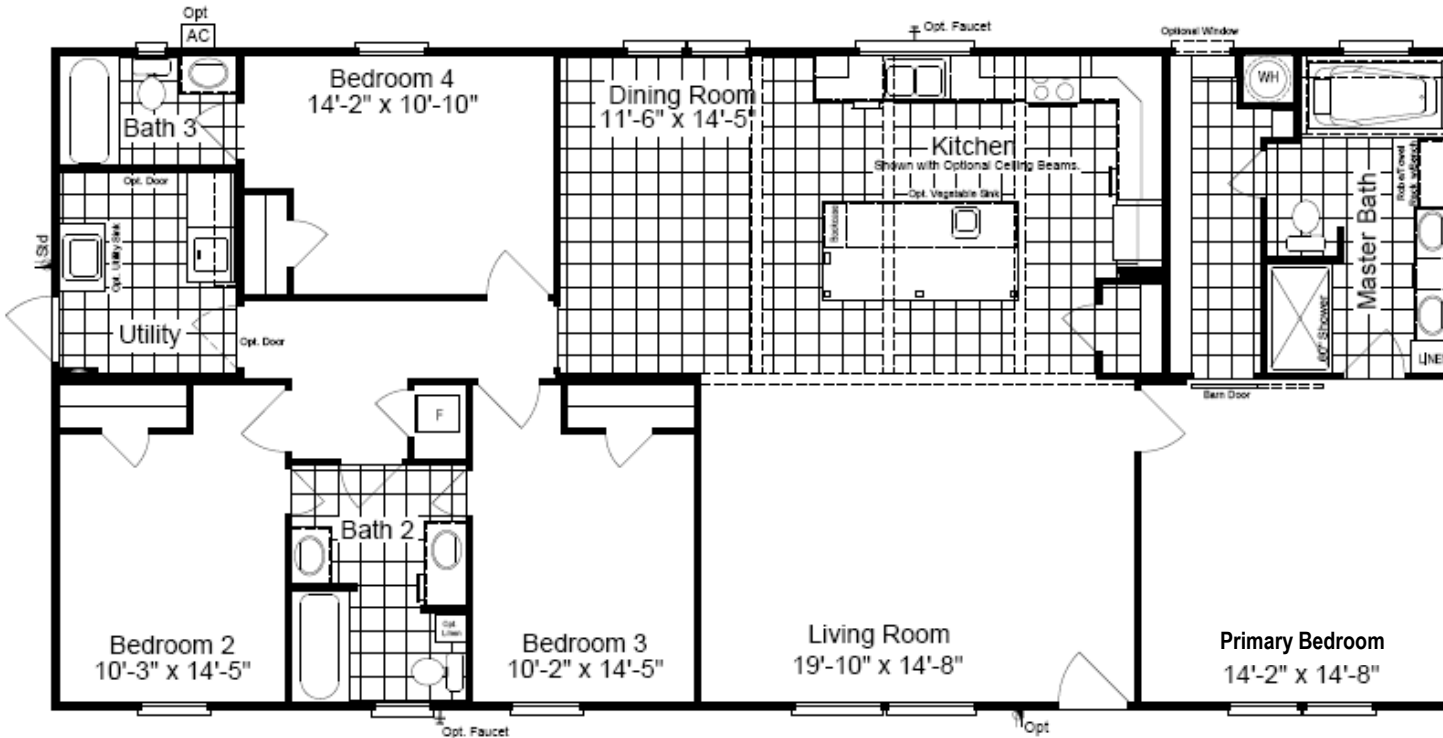
30' wide

Model KH30643B
3 Bedrooms, 2 Baths
1,920 Sq. Ft.
330 Ft. Worth, TX. 7-21

- 8 1/2' Flat Ceilings Throughout
- Dual Pane Windows
- 60" Master Shower
- Island and Social bar
- Pantry
- 6' Slip Tub in Master
- 5' Walk-in shower
- Boomer Bath Option

Copyright © Palm Harbor Homes, Inc. Because Palm Harbor Homes has a continuous product updating and improvement process, prices, plans, dimensions, features, materials, specifications and availability are subject to change without notice or obligation. Please refer to working drawings for actual dimensions. Renderings and floor plans are artist's depictions only and may vary from the completed home. Square footage calculations and room dimensions are approximate subject to industry standards. Rev. 3-20

The Benbrook 64



**30' wide
3 Baths**

Model KH30644B
4 Bedrooms, 3 Baths
1,920 Sq. Ft.
330 Ft. Worth, TX. 7-21

- 8 1/2' Flat Ceilings Throughout
- Dual Pane Windows
- 60" Master Shower
- Island and Social Bar
- Pantry
- 6' Slip Tub in Master
- Huge Master Closet
- Exceptional Plan With 3 Baths

Copyright © Palm Harbor Homes, Inc. Because Palm Harbor Homes has a continuous product updating and improvement process, prices, plans, dimensions, features, materials, specifications and availability are subject to change without notice or obligation. Please refer to working drawings for actual dimensions. Renderings and floor plans are artist's depictions only and may vary from the completed home. Square footage calculations and room dimensions are approximate subject to industry standards. Rev. 3-20