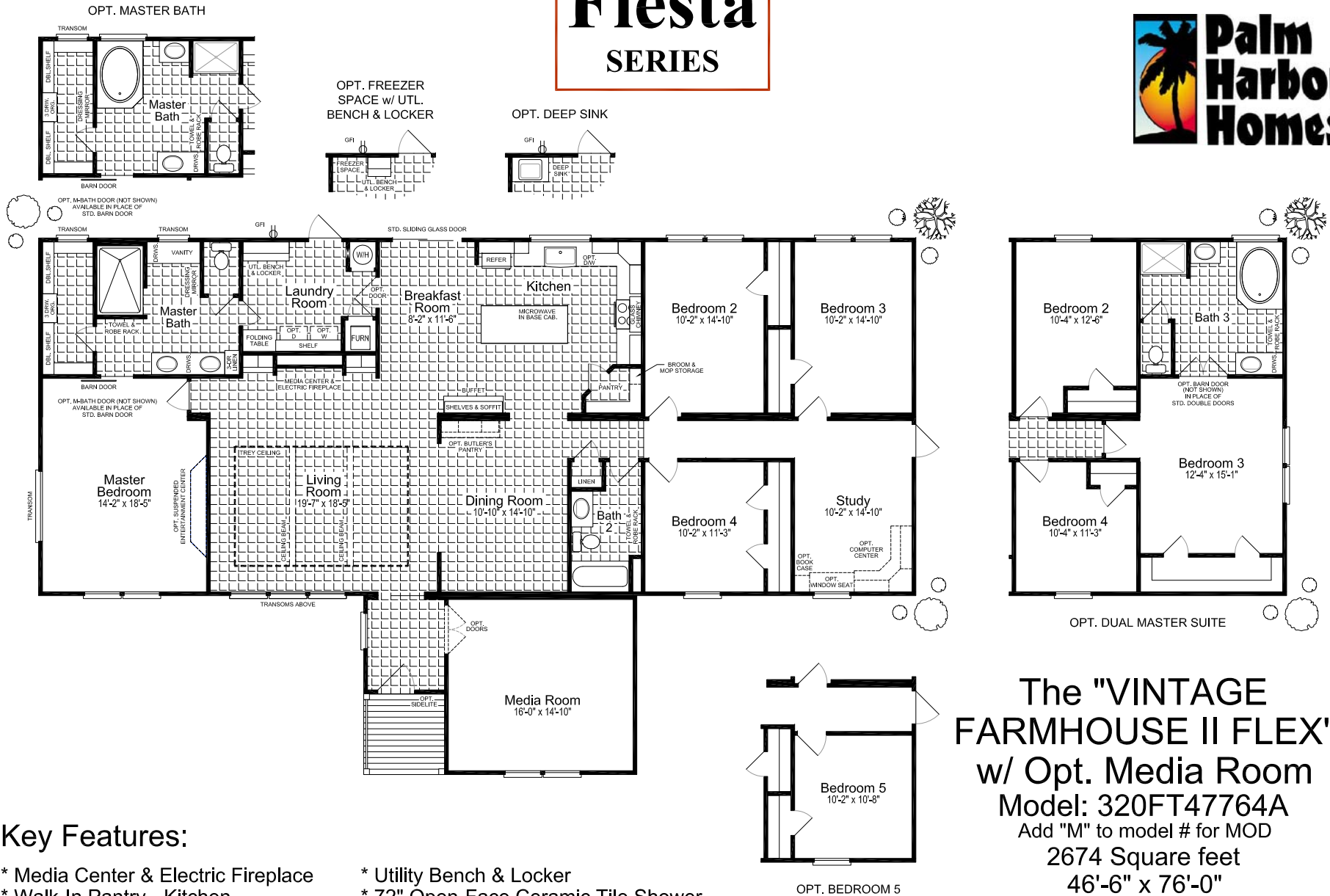


Fiesta SERIES



Key Features:

- * Media Center & Electric Fireplace
- * Walk-In Pantry - Kitchen
- * Buffet w/ Open Shelves - Kitchen
- * Folding Table in Laundry Room
- * Utility Bench & Locker
- * 72" Open-Face Ceramic Tile Shower
- * Vanity in Master Bath
- * Linen Closet in Hall

Copyright © 2019 by Palm Harbor Homes, Inc.
All Rights Reserved.

The "VINTAGE
FARMHOUSE II FLEX"
w/ Opt. Media Room
Model: 320FT47764A
Add "M" to model # for MOD
2674 Square feet
46'-6" x 76'-0"
4 Bedrooms / 2 Baths
Austin, Texas Date: 03/05/2019

Because Palm Harbor Homes has a continuous product updating and improvement process, specifications are subject to change without notice or obligation. Likewise, the floor plan shown is representative only and may vary from the actual home. Square footage calculations are based on nominal widths and all room dimensions are approximate subject to industry standards. R-values may vary in compressed areas. Some transportation components may have been recycled after close inspection for safety and appearance.