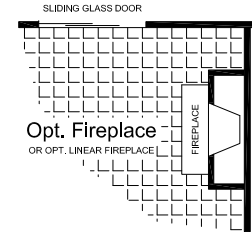


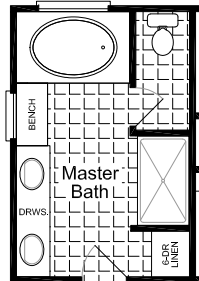
Fiesta SERIES



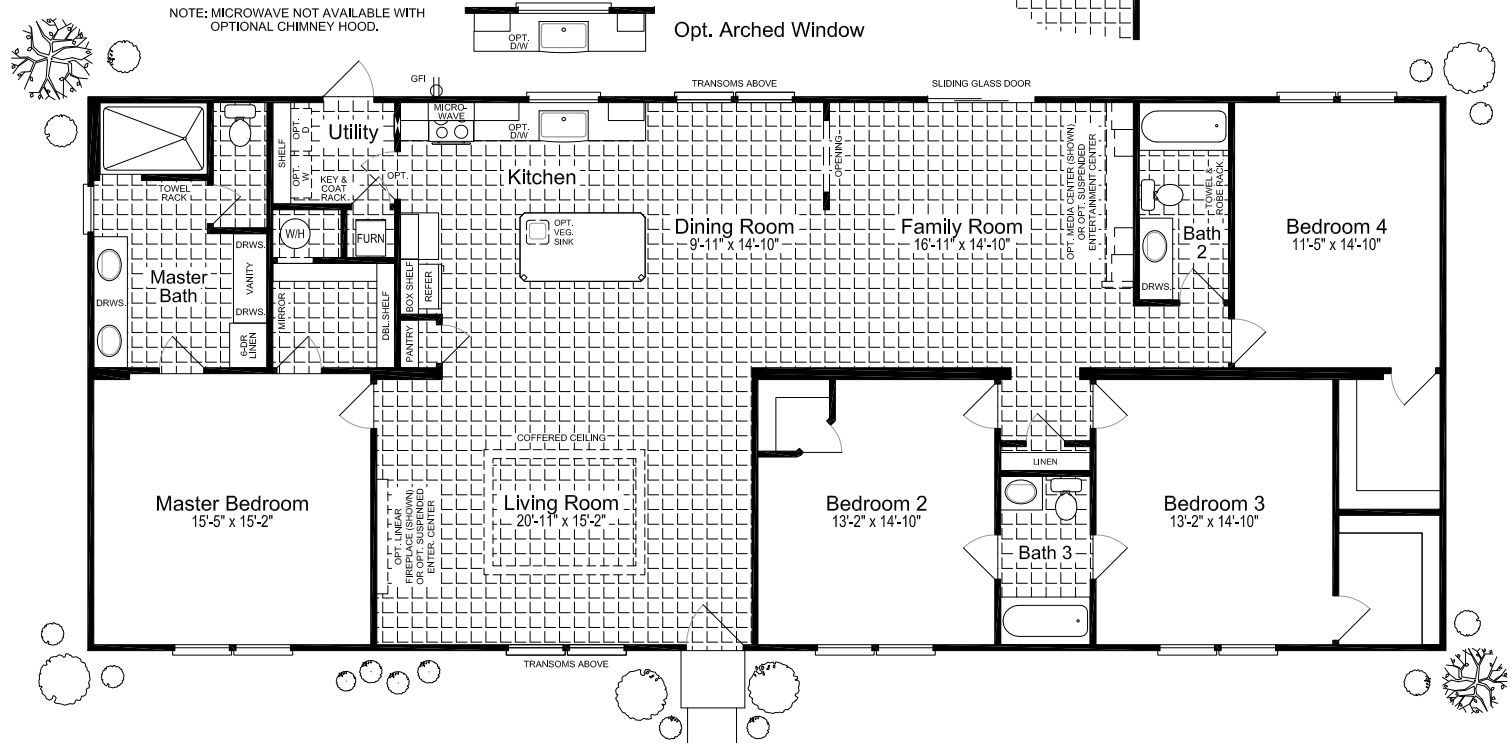
NOTE: MICROWAVE NOT AVAILABLE WITH
OPTIONAL CHIMNEY HOOD.



Opt. Arched Window



Opt. Master Bath



The "SOMERSET III"

Model: 320FT32764I

Add "M" to model # for MOD

2356 Square feet

31'-0" x 76'-0"

4 Bedrooms / 3 Baths

Austin, Texas Date: 11/14/2019

Key Features:

- * Coffered Ceiling - Living Room
- * Large Kitchen Island
- * Kitchen Pantry
- * Coffered Ceiling - Kit. Island
- * Hall Linen Closet

- * Walk-in Closets - All Bedrooms
- * 72" Open-Face Ceramic Tile Shower
- * Vanity in Master Bath
- * 6 Door Linen in Master Bath

Because Palm Harbor Homes has a continuous product updating and improvement process, specifications are subject to change without notice or obligation. Likewise, the floor plan shown is representative only and may vary from the actual home. Square footage calculations are based on nominal widths and all room dimensions are approximate subject to industry standards. R-values may vary in compressed areas. Some transportation components may have been recycled after close inspection for safety and appearance.

Copyright © 2019 by Palm Harbor Homes, Inc.
All Rights Reserved.