



www.palmharbor.com

The Summit  
Collection

VISTA RIDGE  
By Palm Harbor Homes

# THE RANCHO PONDEROSA



## The Rancho Ponderosa Exterior (Opt.) With Opt. Woodgrain Front Door

Approx. 2,356 Sq. Ft.  
4 Bedrooms, 2 Baths

Austin, TX (05)

- Kitchen with office workspace
- Glamour master bath with private toilet
- Breakfast nook with oversized windows
- Utility room with pantry and freezer space
- Grand Canyon living area
- Deep soaker tub in master bath

Copyright © 2010, Palm Harbor Homes, Inc. Because Palm Harbor Homes has a continuous product updating and improvement process, prices, plans, dimensions, features, materials, specifications and availability are subject to change without notice or obligation. Please refer to working drawings for actual dimensions. Renderings and floor plans are artist's depictions only and may vary from the completed home. Square footage calculations and room dimensions are approximate subject to industry standards.



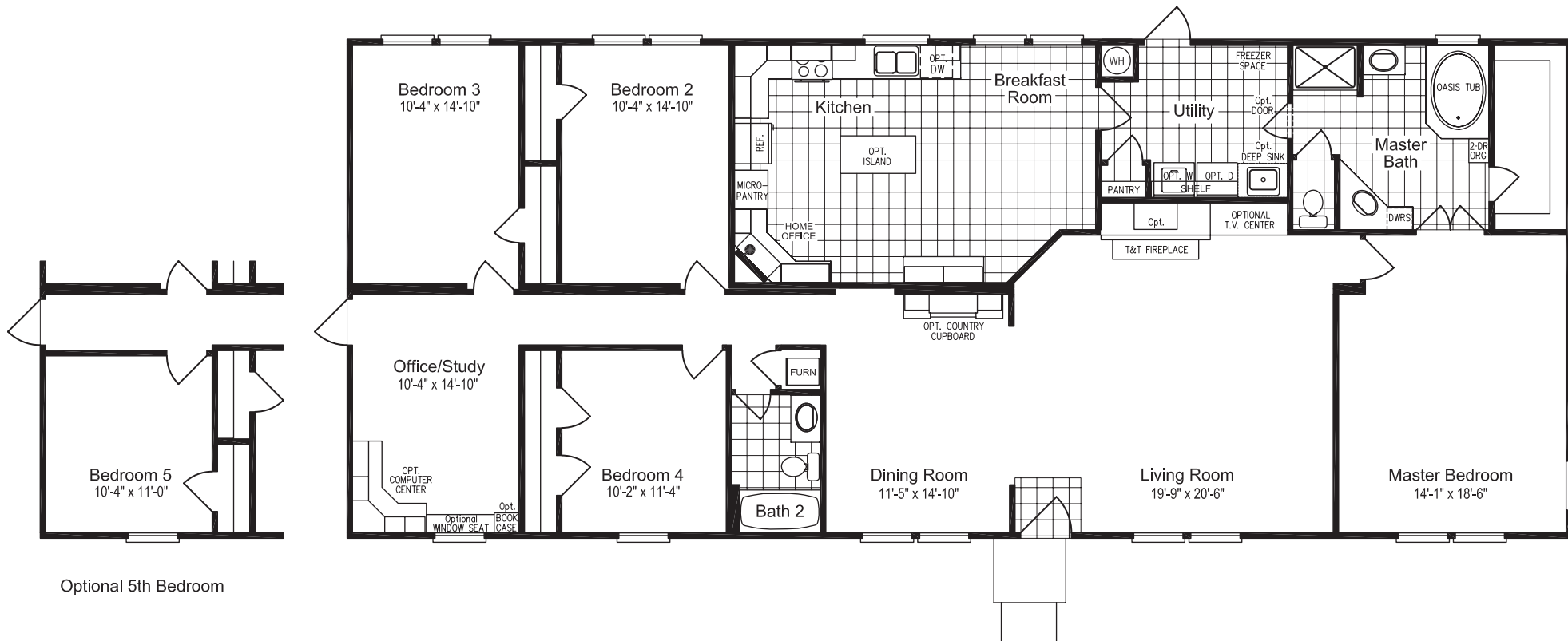


www.palmharbor.com

The Summit Collection

VISTA RIDGE  
By Palm Harbor Homes

# THE PONDEROSA



## The Ponderosa 76U7

Approx. 2,356 Sq. Ft.  
4 Bedrooms, 2 Baths

Austin, TX (05)

Rev. 06/10