

**28' wide**

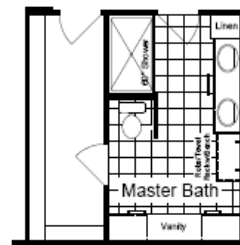
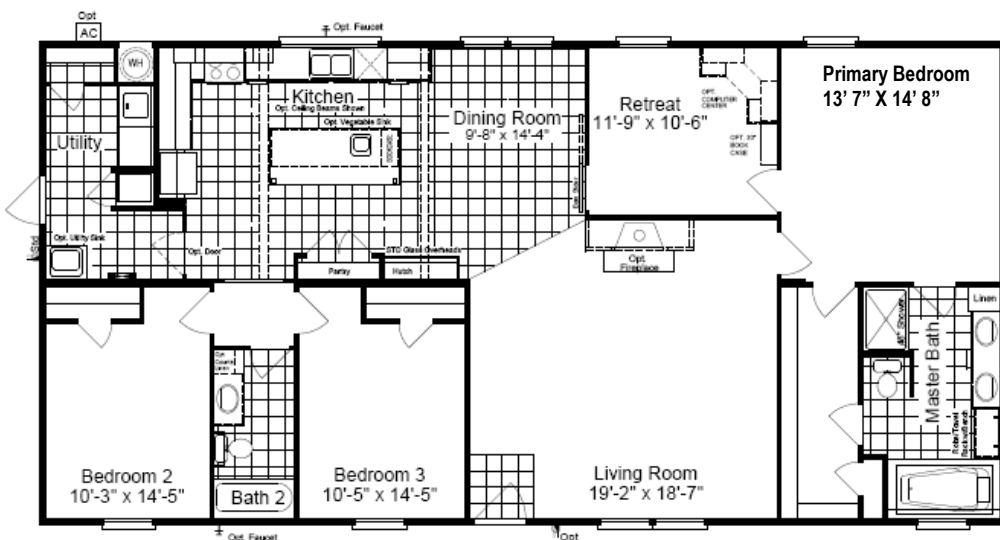
**Model KH28603P**  
**3 Bedroom, 2 Bath**  
**1,640 sq. ft.**  
330 Ft. Worth, TX. 7-21

- 8 1/2' Flat Ceilings Throughout
- Dual Pane Windows
- 48" Master Shower
- Large Island in Kitchen
- Barn Door
- 6' Slip Tub in Master
- Picture Window in Kitchen
- Shelter-in Retreat Room

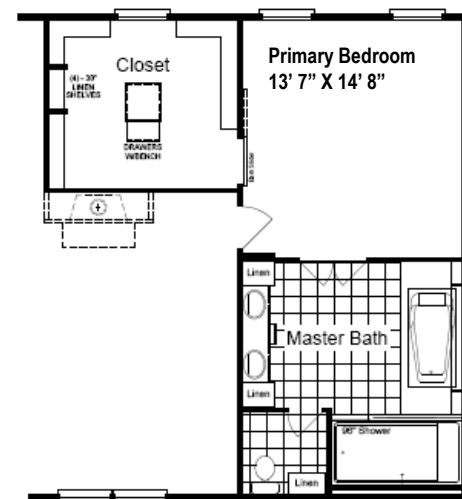
Copyright © Palm Harbor Homes, Inc. Because Palm Harbor Homes has a continuous product updating and improvement process, prices, plans, dimensions, features, materials, specifications and availability are subject to change without notice or obligation. Please refer to working drawings for actual dimensions. Renderings and floor plans are artist's depictions only and may vary from the completed home. Square footage calculations and room dimensions are approximate subject to industry standards. Rev. 3-20



Option Wall Oven/Cooktop/Drink Refer



Option Boomer Bath



Optional Spa Master Bath w/Divacloset

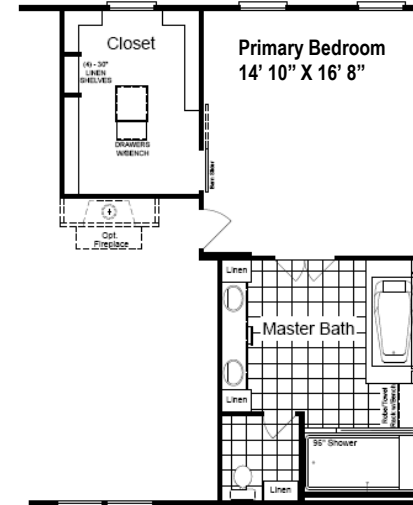
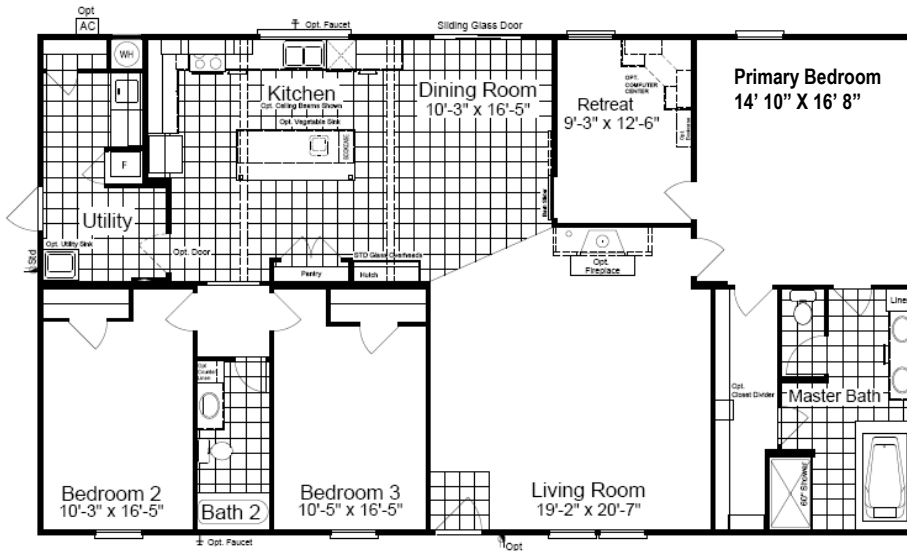
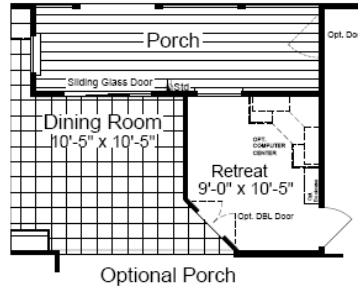
**30' wide**

**Model KH30603P**  
**3 Bedroom, 2 Bath**  
**1,800 sq. ft.**

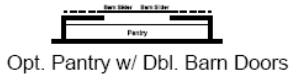
330 Ft. Worth, TX. 7-21

- 8 1/2' Flat Ceilings Throughout
- Dual Pane Windows
- 48" Master Shower
- Large Island in Kitchen
- Barn Door
- 6' Slip Tub in Master
- Picture Window in Kitchen
- Shelter-in Retreat Room

Copyright © Palm Harbor Homes, Inc. Because Palm Harbor Homes has a continuous product updating and improvement process, prices, plans, dimensions, features, materials, specifications and availability are subject to change without notice or obligation. Please refer to working drawings for actual dimensions. Renderings and floor plans are artist's depictions only and may vary from the completed home. Square footage calculations and room dimensions are approximate subject to industry standards. Rev. 3-20



**34' wide**



**Model KH34603P**  
**3 Bedroom, 2 Bath**  
**2,040 sq. ft.**  
330 Ft. Worth, TX. 7-21

- 8 1/2' Flat Ceilings Throughout
- Dual Pane Windows
- 60" Master Shower
- Large Island in Kitchen
- Optional wet sink
- 6' Slip Tub in Master
- Picture Window in Kitchen
- Shelter-in Retreat Room

Copyright © Palm Harbor Homes, Inc. Because Palm Harbor Homes has a continuous product updating and improvement process, prices, plans, dimensions, features, materials, specifications and availability are subject to change without notice or obligation. Please refer to working drawings for actual dimensions. Renderings and floor plans are artist's depictions only and may vary from the completed home. Square footage calculations and room dimensions are approximate subject to industry standards. Rev. 3-20