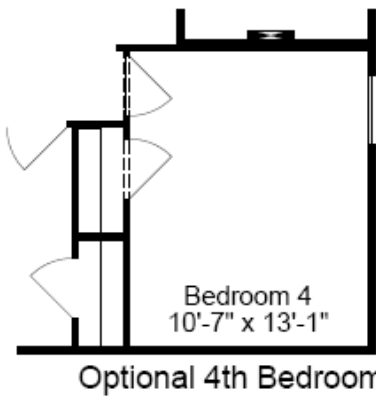
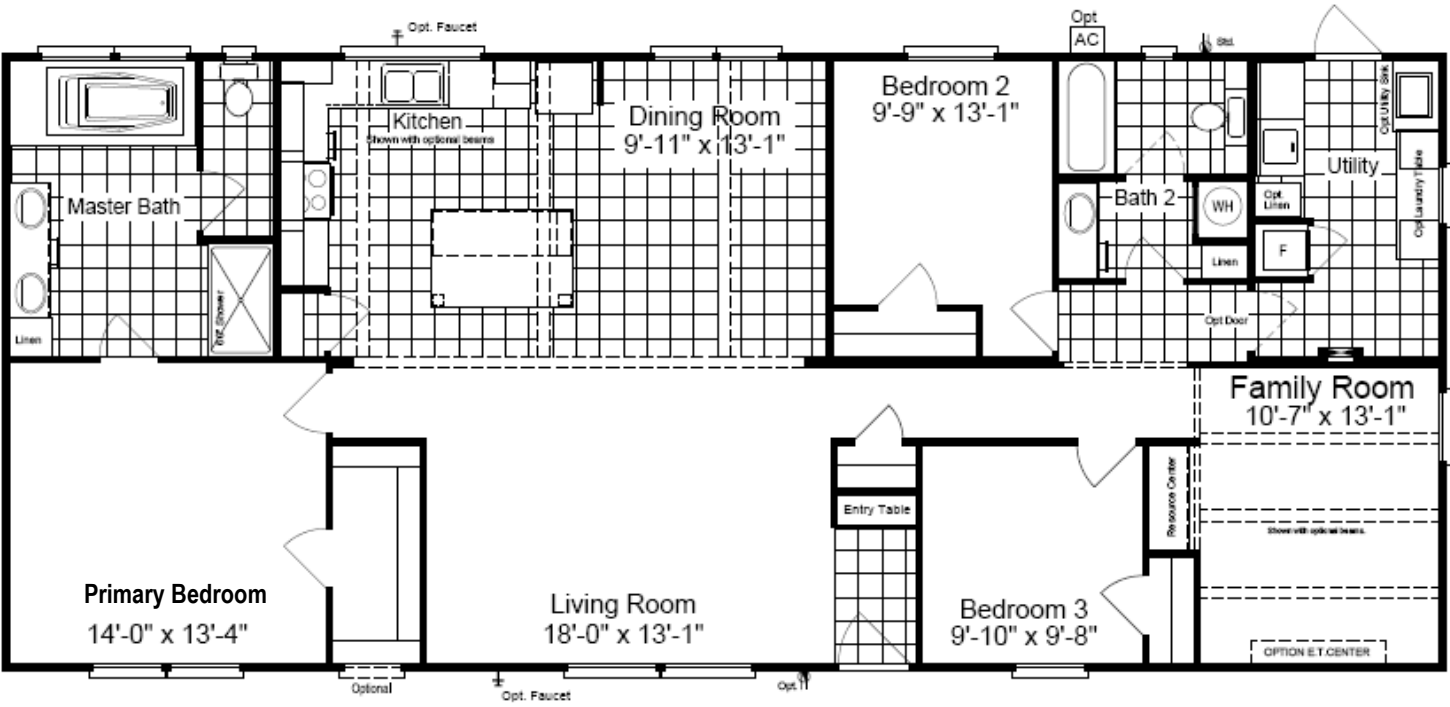


The Carrington 64



28' wide

Model KH28643C
3 Bedrooms, 2 Baths
1,749 Sq. Ft.
330 Ft. Worth, TX. 7-21

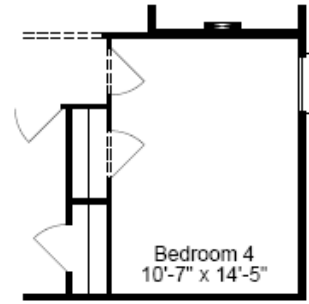
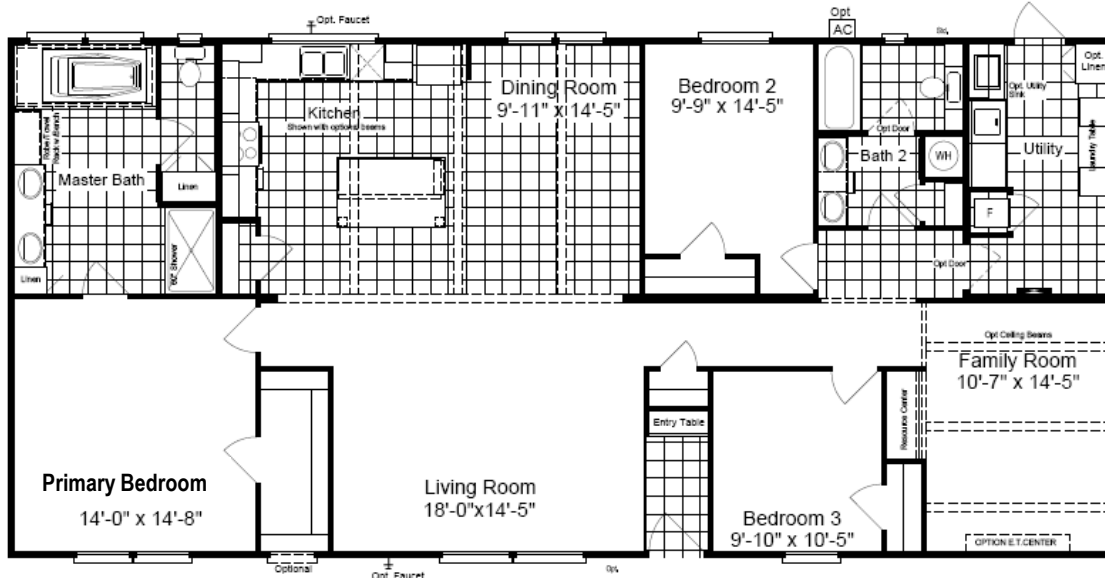
- 8 1/2' Flat Ceilings Throughout
- Dual Pane Windows
- 60" Master Shower
- Large Island in Kitchen
- Barn Door
- 6' Slip Tub in Master
- Freezer Space
- Fun Room, Family Room

Copyright © Palm Harbor Homes, Inc. Because Palm Harbor Homes has a continuous product updating and improvement process, prices, plans, dimensions, features, materials, specifications and availability are subject to change without notice or obligation. Please refer to working drawings for actual dimensions. Renderings and floor plans are artist's depictions only and may vary from the completed home. Square footage calculations and room dimensions are approximate subject to industry standards. Rev. 3-20



OPT. SPA MASTER BATH

**Spa Bath Option:
8' Shower in lieu of 5'**



Optional 4th Bedroom

30' wide

Model KH30643C
3 Bedrooms, 2 Baths
1,920 Sq. Ft.

330 Ft. Worth, TX. 7-21

- 8 1/2' Flat Ceilings Throughout
- Dual Pane Windows
- 60" Master Shower
- Large Island in Kitchen
- Barn Door
- 6' Slip Tub in Master
- Freezer Space
- Walk-in Master Closet

Copyright © Palm Harbor Homes, Inc. Because Palm Harbor Homes has a continuous product updating and improvement process, prices, plans, dimensions, features, materials, specifications and availability are subject to change without notice or obligation. Please refer to working drawings for actual dimensions. Renderings and floor plans are artist's depictions only and may vary from the completed home. Square footage calculations and room dimensions are approximate subject to industry standards. Rev. 3-20