



www.palmharbor.com

The Summit
Collection

VISTA RIDGE
By Palm Harbor Homes

THE BONANZA FLEX



The Bonanza Flex Exterior (Opt.) With Media Flex Room - SCXE 64F1 With Opt. Woodgrain Front Door & Sidelight

Approx. 2,302 Sq. Ft., 3 Bedrooms, 2 Baths

Austin, TX (05)

- Kitchen w/Office Workspace and Microwave Cabinet
- Glamour Master Bath w/Private Commode
- Breakfast Nook w/Oversized Windows
- Utility Room w/Pantry and Freezer Space
- His and Her Separate Lavy Basins
- Grand Canyon Living Area
- Deep Soaker Tub in Master Bath

Copyright © 2009, Palm Harbor Homes, Inc. Because Palm Harbor Homes has a continuous product updating and improvement process, prices, plans, dimensions, features, materials, specifications and availability are subject to change without notice or obligation. Please refer to working drawings for actual dimensions. Renderings and floor plans are artist's depictions only and may vary from the completed home. Square footage calculations and room dimensions are approximate subject to industry standards.

Rev. 06/10





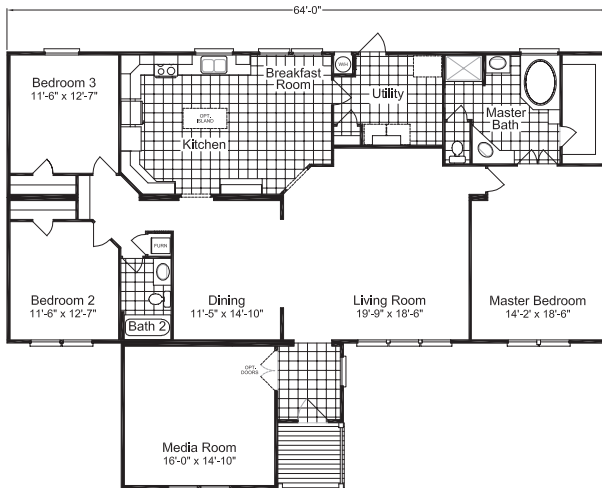
www.palmharbor.com

The Summit Collection

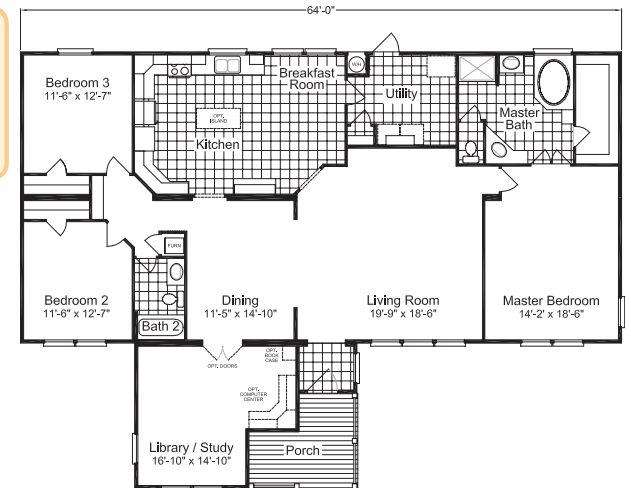
VISTA RIDGE
By Palm Harbor Homes

THE BONANZA FLEX

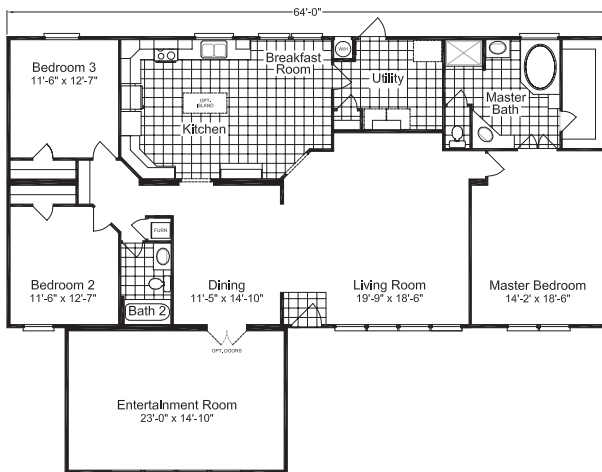
w/Optional
Media Room
Model: SCXE64F1
Approx. 2,302 Sq. Ft.



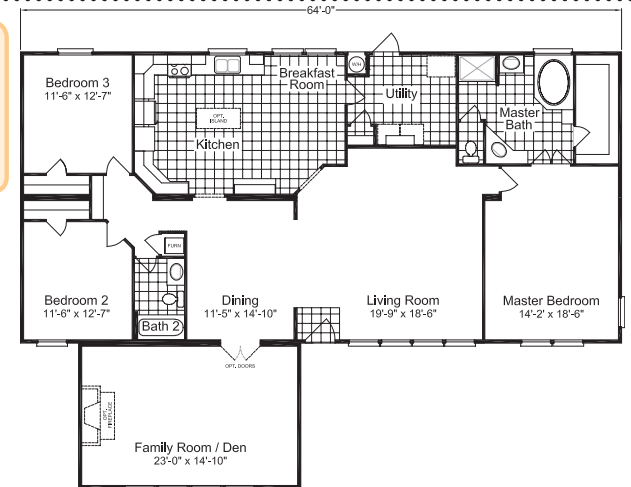
w/Optional
Library / Study
Model: SCXE64F1
Approx. 2,256 Sq. Ft.



w/Optional
Entertainment Room
Model: SCXE64F1
Approx. 2,351 Sq. Ft.



w/Optional
Family Room / Den
Model: SCXE64F1
Approx. 2,351 Sq. Ft.



The Bonanza Flex

SCXE 64F1

Approx. 2,302 Sq. Ft.
3 Bedrooms, 2 Baths

Austin, TX (05)

Rev. 06/10

