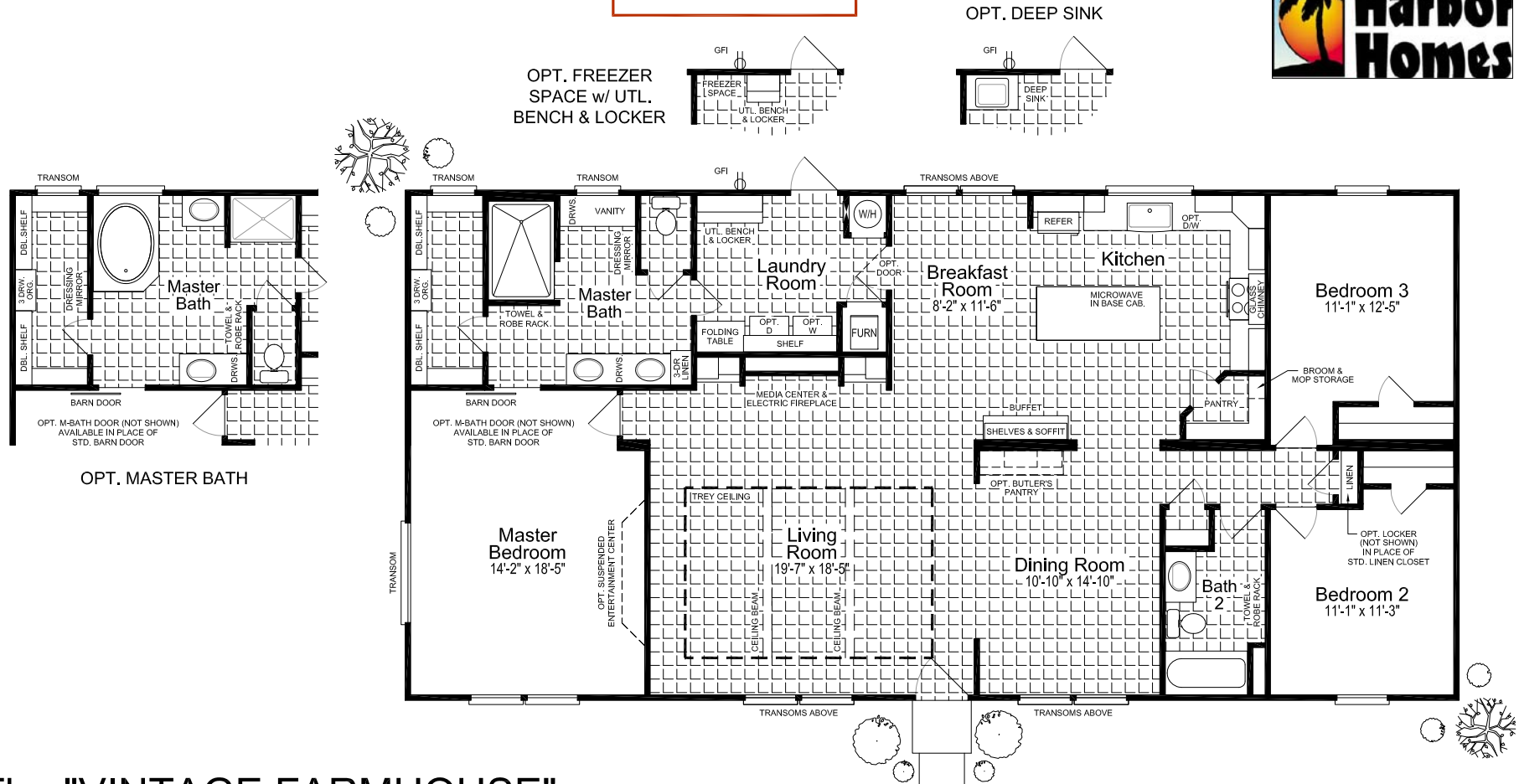


# Fiesta SERIES



## The "VINTAGE FARMHOUSE"

Model: 320FT32643C

Add "M" to model # for MOD

1984 Square feet

31'-0" x 64'-0"

3 Bedrooms / 2 Baths

Austin, Texas Date: 02/28/2019

### Key Features:

- \* Media Center & Electric Fireplace
- \* Walk-In Pantry - Kitchen
- \* Buffet w/ Open Shelves - Kitchen
- \* Folding Table in Laundry Room
- \* Utility Bench & Locker
- \* 72" Open-Face Ceramic Tile Shower
- \* Vanity in Master Bath
- \* Linen Closet in Hall

Because Palm Harbor Homes has a continuous product updating and improvement process, specifications are subject to change without notice or obligation. Likewise, the floor plan shown is representative only and may vary from the actual home. Square footage calculations are based on nominal widths and all room dimensions are approximate subject to industry standards. R-values may vary in compressed areas. Some transportation components may have been recycled after close inspection for safety and appearance.

Copyright © 2019 by Palm Harbor Homes, Inc.  
All Rights Reserved.

# Fiesta

## SERIES



\* STANDARD VINTAGE EXTERIOR



OPTIONAL SUN RANCH EXTERIOR



OPTIONAL RIDGELINE EXTERIOR

Because Palm Harbor Homes has a continuous product updating and improvement process, specifications are subject to change without notice or obligation. Likewise, the floor plan shown is representative only and may vary from the actual home. Square footage calculations are based on nominal widths and all room dimensions are approximate subject to industry standards. R-values may vary in compressed areas. Some transportation components may have been recycled after close inspection for safety and appearance.

The "VINTAGE FARMHOUSE"

Model: 320FT32643C

Austin, Texas Date: 02/28/2019

Copyright © 2019 by Palm Harbor Homes, Inc.  
All Rights Reserved.