

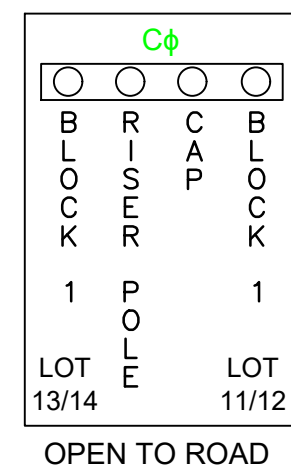
VICINITY MAP  
NOT TO SCALE

LEGEND:

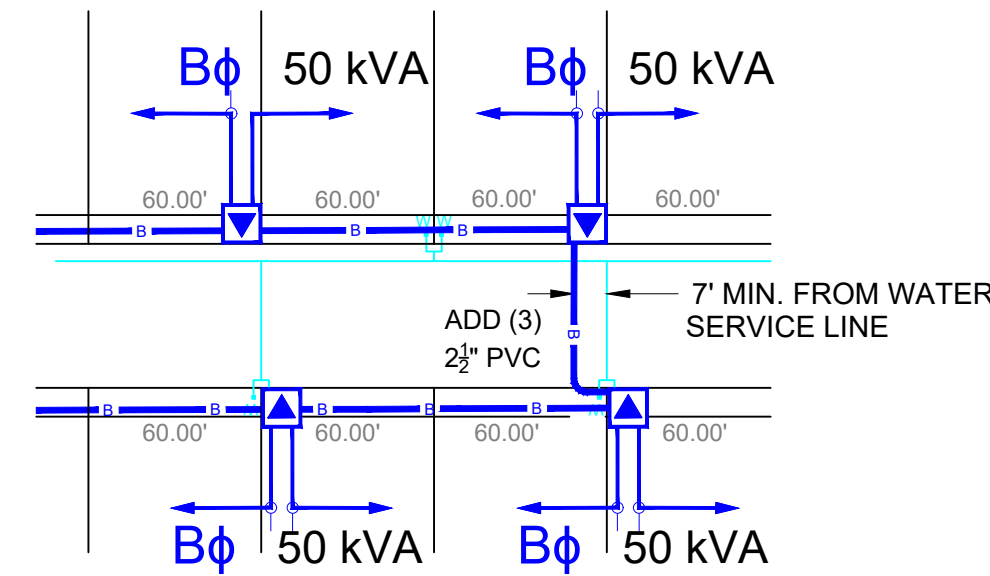
- PROPOSED POLE
  - PROPOSED POLE WITH RISER(S)
  - EXISTING POLE
  - ☀ STREET LIGHT
  - ▲ PAD MOUNT TRANSFORMER
  - SECONDARY PEDESTAL
  - OPEN POINT
  - SWITCH
  - ⊥ WATER METERS
- A PHASE
  - B PHASE
  - C PHASE
  - 350 TPX
  - 4/0 TPX
  - 12/2 w/Gnd
- PRIMARY UNDERGROUND
  - SECONDARY UNDERGROUND
  - STREETLIGHT CIRCUIT
  - FUTURE SERVICE STUB-OUT (CONDUIT ONLY)

GENERAL NOTES:

- FOR FUTURE TEMPORARY SERVICE, STUB OUT (1) 2" FLEXIBLE PVC CONDUIT 6" BELOW GRADE CENTERED IN FRONT OF ALL TRANSFORMERS AND PEDESTALS. WHEN TEMPORARY SERVICE IS RETIRED, CUT OFF AND CAP 6" BELOW FINISHED GRADE.
- VERIFY ALL UNDERGROUND UTILITIES BEFORE DIGGING.
- J. RATLIFF WILL NOTIFY CONSTRUCTION CREWS WHEN IT IS OK TO PROCEED WITH INSTALLATION OF THE UNDERGROUND SYSTEM.
- GVEC TO HAVE A 5' WIDE ELECTRIC EASEMENT ON ALL ROAD CROSSINGS IN WHICH ELECTRIC LINES ARE PLACED.



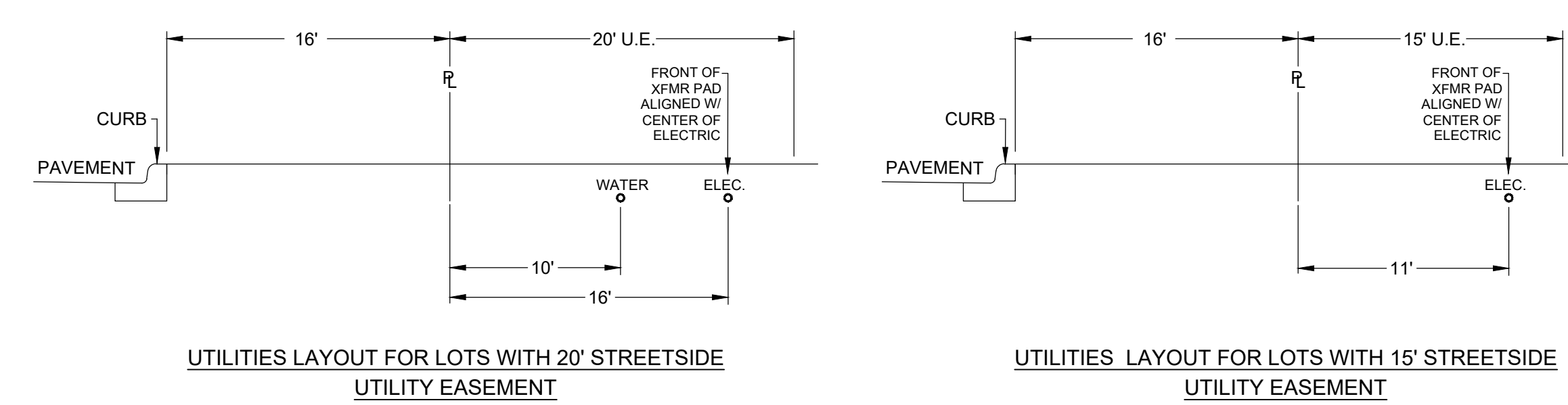
DETAIL 3  
PROPOSED SWITCH CABINET



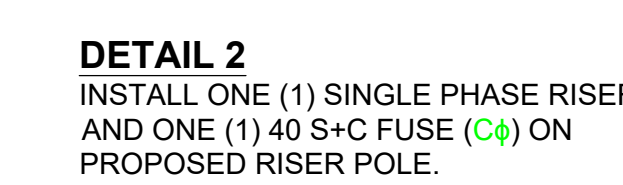
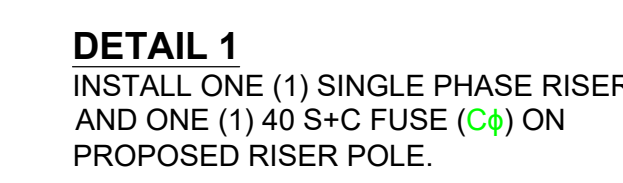
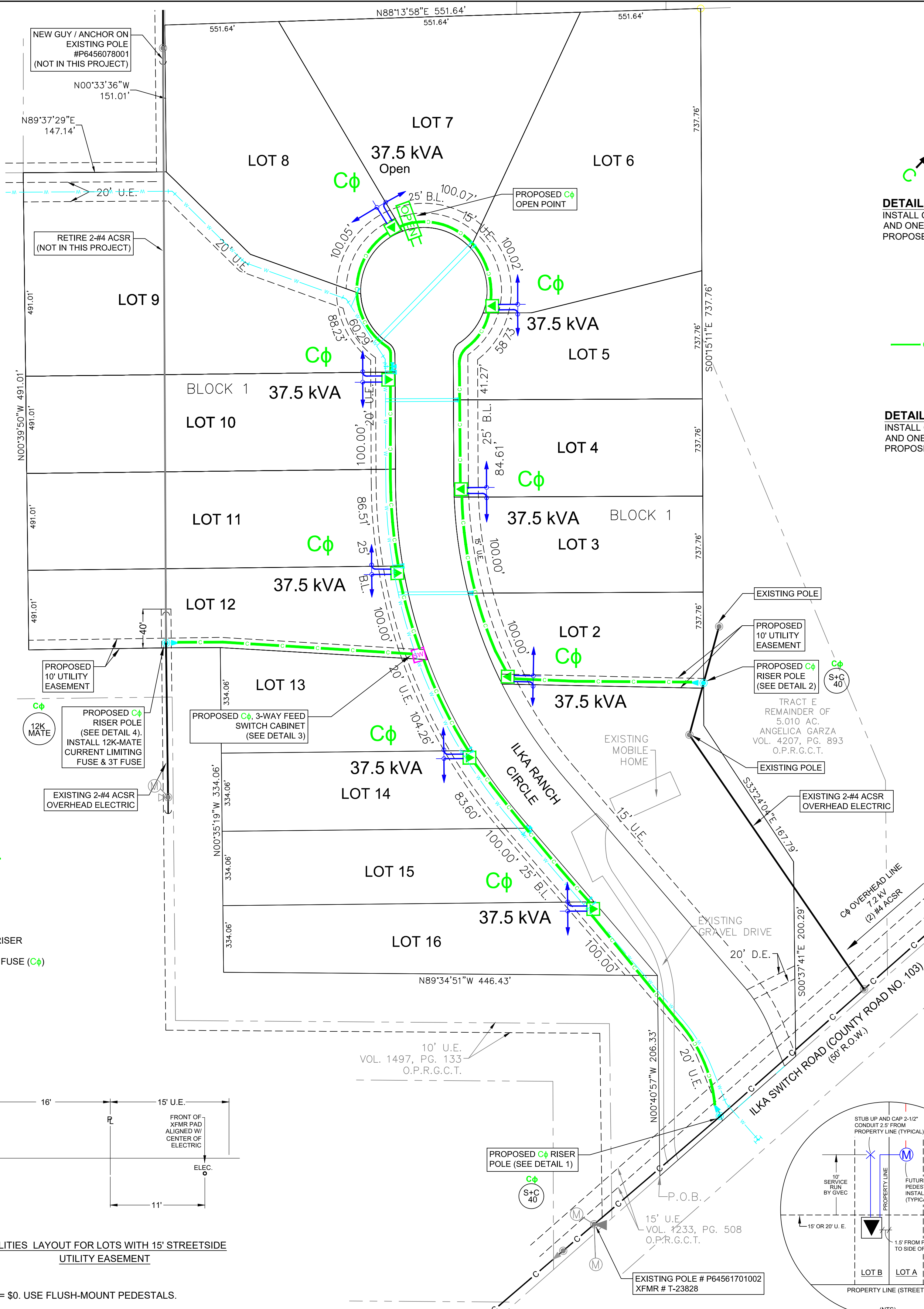
ROAD CROSSING DETAIL - REQUIRED CLEARANCE FROM WATER MAIN AND SERVICE LINES

ALL ELECTRIC CONDUITS PARALLEL WITH WATER MAIN OR SERVICE LINES TO HAVE SEVEN FOOT (7') HORIZONTAL CLEARANCE.

DETAIL 4  
INSTALL ONE (1) SINGLE PHASE RISER (1) 3T FUSE (C<sub>φ</sub>) (1) 12K-MATE CURRENT LIMITING FUSE (C<sub>φ</sub>)

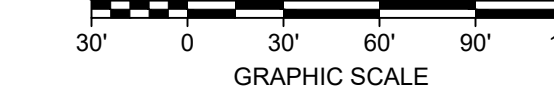


STREET LIGHT NOTE: CONT. FOR FOUR (0) STREET LIGHTS @ \$1,200.00 = \$0. USE FLUSH-MOUNT PEDESTALS.

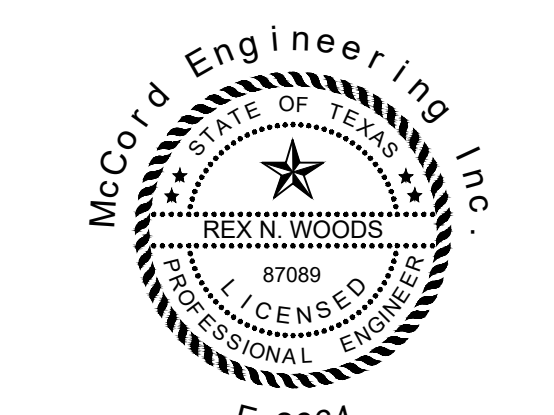


Upline Device  
K108  
7.2 kV

WO# 1586469  
15 LOTS (NEW)  
1 LOT (EXISTING)  
0 LIGHTS



REVISION



THE SEAL APPEARING ON THIS DOCUMENT WAS AUTHORIZED BY REX N. WOODS, P.E. 87089 JANUARY 4, 2018  
NOT VALID UNLESS SIGNED  
ALTERATION OF A SEALED DOCUMENT WITHOUT PROPER NOTIFICATION TO THE RESPONSIBLE ENGINEER IS AN OFFENSE UNDER THE TEXAS ENGINEERING PRACTICE ACT.

APPROVED FOR CONSTRUCTION



GUADALUPE VALLEY ELECTRIC CO-OP., INC.  
P.O. BOX 118 - 825 E. SARAH DeWITT DR.  
GONZALES, TEXAS 78629-0118  
830-672-2871  
1800-223-GVEC(4832)  
FAX 210-672-9841  
e-mail info@gvec.org

DATE	8-11-2017	JOB NAME	ILKA RANCH ESTATES
DRAWN BY	AH		
CHECKED BY			
DATE	8-11-2017	WORK ORDER #	WO# 1586469
SCALE	1" = 60'		
DRAWN BY	AH	DWG NO.	MEI-12882
		DATE	8-11-2017
		DWG NO.	GVC-3-1
		SHEET NO.	1 OF 1
		REV.	0

Material List Table		
Quantity	CU	Description
2,210	1/0 AL 25KV	1 - 1/0 260 mill primary underground cable
0	12/2 UF W/ GND	12-3 bundled street light conductor
5	90-1	1" 90 degree schedule 40 PVC sweep
46	90-2.5	2.5" 90 degree schedule 40 PVC sweep
0	M60-BU23.5HPS	Residential street light
0	P20-SL	Twenty-five foot (25') anchor base brushed aluminum pole with one ten foot (10') mast arm and cobra head fixture
24	UJ2-6	Connector block on secondary terminals of transformer (75kVA and below)
0	UJ2-9	Street light fuse
8	UM1-5NC	Pre-cast pad for single phase transformer
1	UM1-7C	Concrete pad for single-phase junction box
1	UM31	Single phase j-box enclosure
9	UM48-1	Single phase pad grounding
19	UM6-1	200 amp load break primary elbow
1	UM6-10	200 amp bushing cap
19	UM6-12	Install one (1) red, white or blue plastic cable tag, with cable tie on underground cable to identify cable feed points when underground cable is terminated
1	UM6-15	Stand-off insulator - 200A
1	UM6-22	4 point junction assembly, 200 amp
1	UM6-34	Elbow surge arrester
9	UM6-4	Fault indicator at test point of load break elbow or on cable
0	UPVC 1	1" Streetlight electrical schedule 40 PVC
80	UPVC 2F	2" flexible electrical conduit for temporary service
2,710	UPVC 2.5	2.5" electrical schedule 40 PVC
2,213	UR2 48-24	Trenching
7	VUG10-37.5 (Loop)	Single phase pad-mounted transformer, Looped, 37.5 kVA
1	VUG10-37.5 (Open)	Single phase pad-mounted transformer, Open, 37.5 kVA
3	VUM-2	Single phase primary riser assembly
3	WP452	45' class 2 wood pole