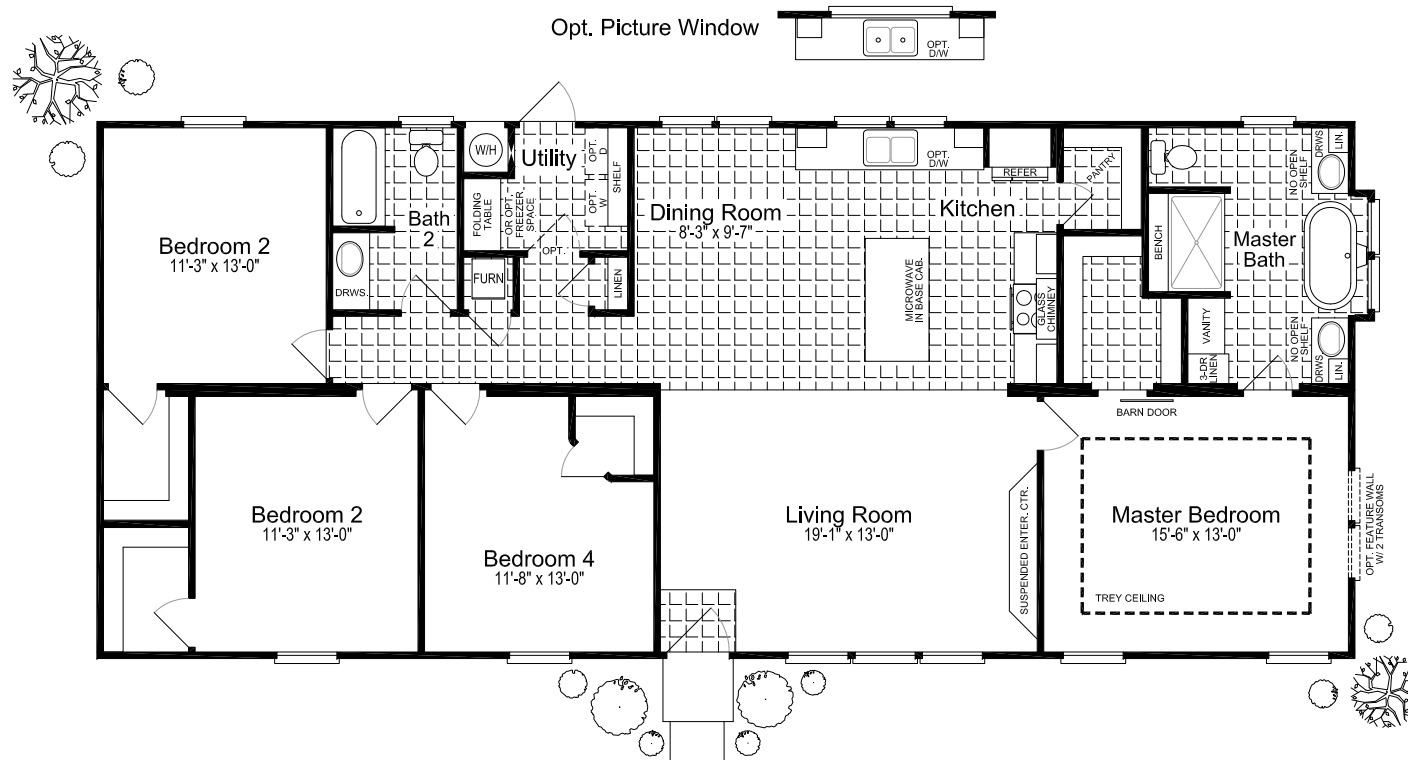


# Fiesta SERIES



## The "URBAN HOMESTEAD II"

Model: 320FT28644B

Add "M" to model # for MOD (REFER P4 64S5)

1749 Square feet

27'-4" x 64'-0"

4 Bedrooms / 2 Baths

Austin, Texas Date: 10/05/2016

### Key Features:

- \* Large Kitchen Island
- \* Kitchen Pantry
- \* Trey Ceiling - MBR
- \* Suspended Ent. Center - LR
- \* Fixed Pane Windows - DR/Kit./MBath
- \* Free Standing Tub - MBath
- \* 60" Shower W/ Full Bench - MBath
- \* Vanity W/ Linen Cabinetry - MBath
- \* Walk-In Closets - All Bedrooms

Because Palm Harbor Homes has a continuous product updating and improvement process, specifications are subject to change without notice or obligation. Likewise, the floor plan shown is representative only and may vary from the actual home. Square footage calculations are based on nominal widths and all room dimensions are approximate subject to industry standards. R-values may vary in compressed areas. Some transportation components may have been recycled after close inspection for safety and appearance.

Copyright © 2017 by Palm Harbor Homes, Inc.  
All Rights Reserved.

# Fiesta

## SERIES



SUN RANCH EXTERIOR



OPTIONAL RIDGELINE EXTERIOR

Because Palm Harbor Homes has a continuous product updating and improvement process, specifications are subject to change without notice or obligation. Likewise, the floor plan shown is representative only and may vary from the actual home. Square footage calculations are based on nominal widths and all room dimensions are approximate subject to industry standards. R-values may vary in compressed areas. Some transportation components may have been recycled after close inspection for safety and appearance.

The "URBAN HOMESTEAD II"  
Model: 320FT28644B  
Austin, Texas      Date: 10/05/2016

Copyright © 2017 by Palm Harbor Homes, Inc.  
All Rights Reserved.