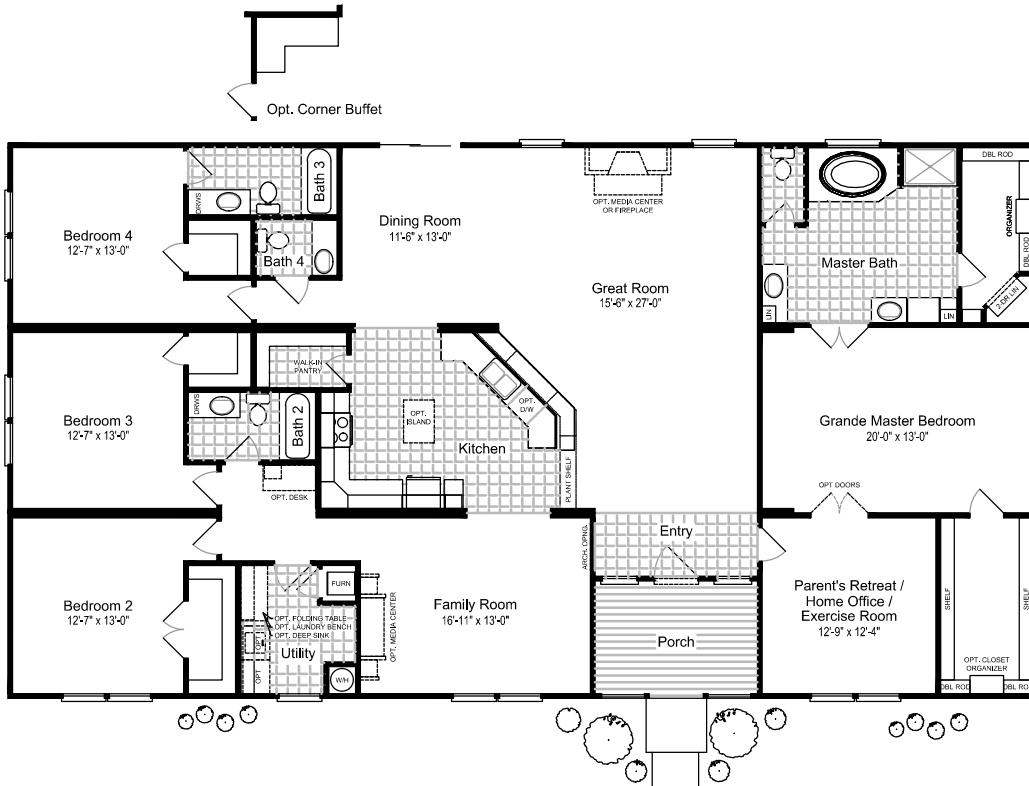


VISTA RIDGE

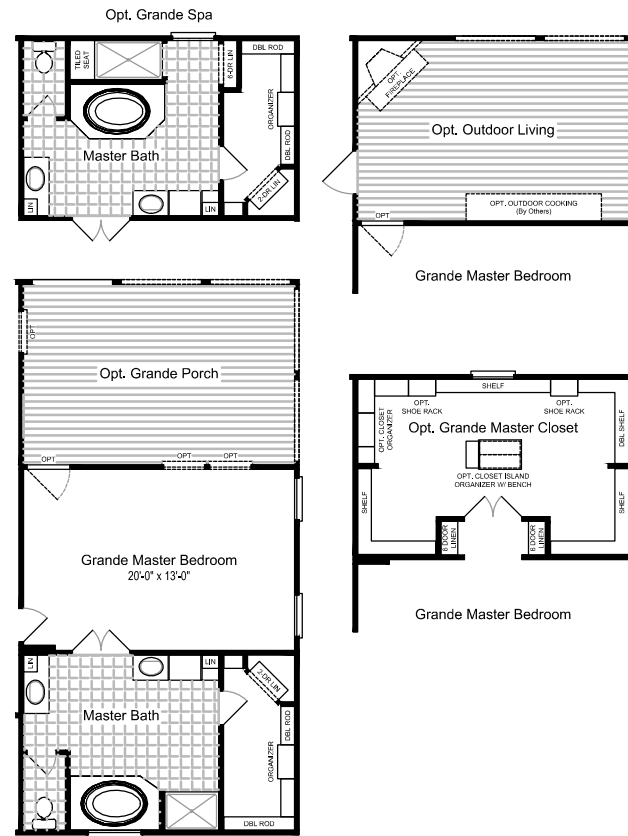
By Palm Harbor Homes



The "HACIENDA III"
Model: 320VR41764A
 Add "M" to model # for MOD (Ref. WD 76D3)
3012 Square feet
41'-0" x 76'-0"
4 Bedrooms / 3.5 Baths
 Austin, Texas Date: 01/05/2015

Key Features:

- Grande Master Suite
- Full Soaker Tub and 48" Shower
- Covered Porch and Entrance
- 'Center of the Universe' Kitchen
- Massive Great Room Area
- Large Family Room
- Parent's Retreat / Home Office



Because Palm Harbor Homes has a continuous product updating and improvement process, specifications are subject to change without notice or obligation. Likewise, the floor plan shown is representative only and may vary from the actual home. Square footage calculations are based on nominal widths and all room dimensions are approximate subject to industry standards. R-values may vary in compressed areas. Some transportation components may have been recycled after close inspection for safety and appearance.

Copyright © 2015 by Palm Harbor Homes, Inc.
 All Rights Reserved.

