

Key Features:

- * Grande Master Suite
- * Full Soaker Tub and 48" Shower
- * Covered Porch and Entrance
- * "Center of the Universe" Kitchen
- * Massive Great Room Area
- * Large Family Room
- * Retreat and Play Room

The "HACIENDA III FLEX" w/ Opt. Family / Ent. Room

Model: 320VR57764A

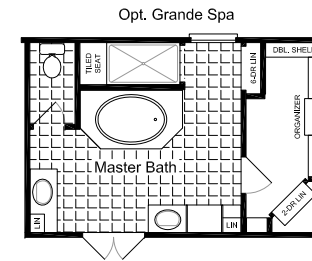
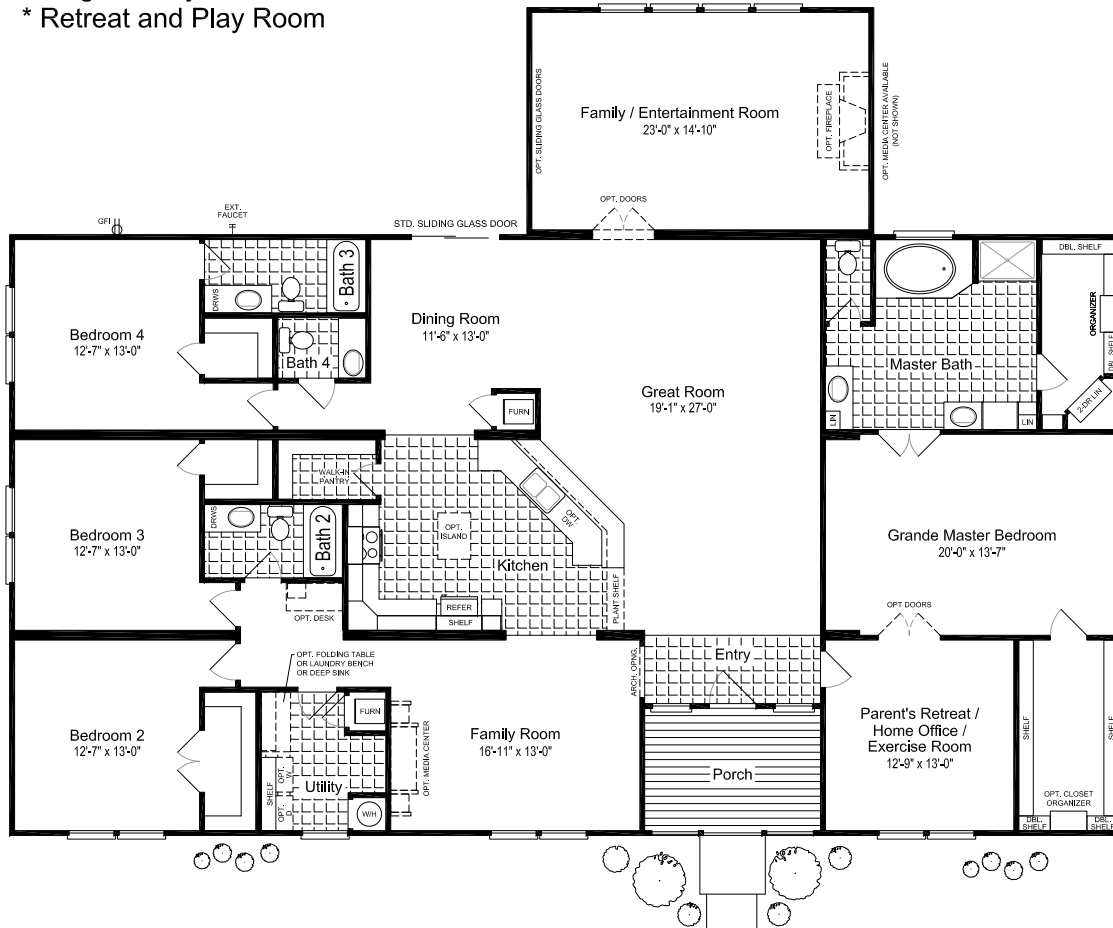
Add "M" to model # for MOD

3379 Square feet

56'-6" x 76'-0"

4 Bedrooms / 3.5 Baths

Austin, Texas Date: 03/07/2018



Because Palm Harbor Homes has a continuous product updating and improvement process, specifications are subject to change without notice or obligation. Likewise, the floor plan shown is representative only and may vary from the actual home. Square footage calculations are based on nominal widths and all room dimensions are approximate subject to industry standards. R-values may vary in compressed areas. Some transportation components may have been recycled after close inspection for safety and appearance.

Copyright © 2019 by Palm Harbor Homes, Inc.
All Rights Reserved.



The "HACIENDA III FLEX" w/ Opt. Media Room

Model: 320VR57764A

Add "M" to model # for MOD

3330 Square feet

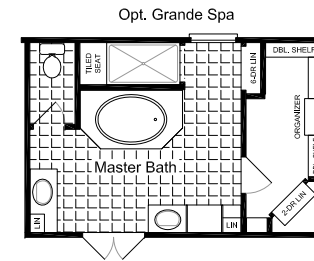
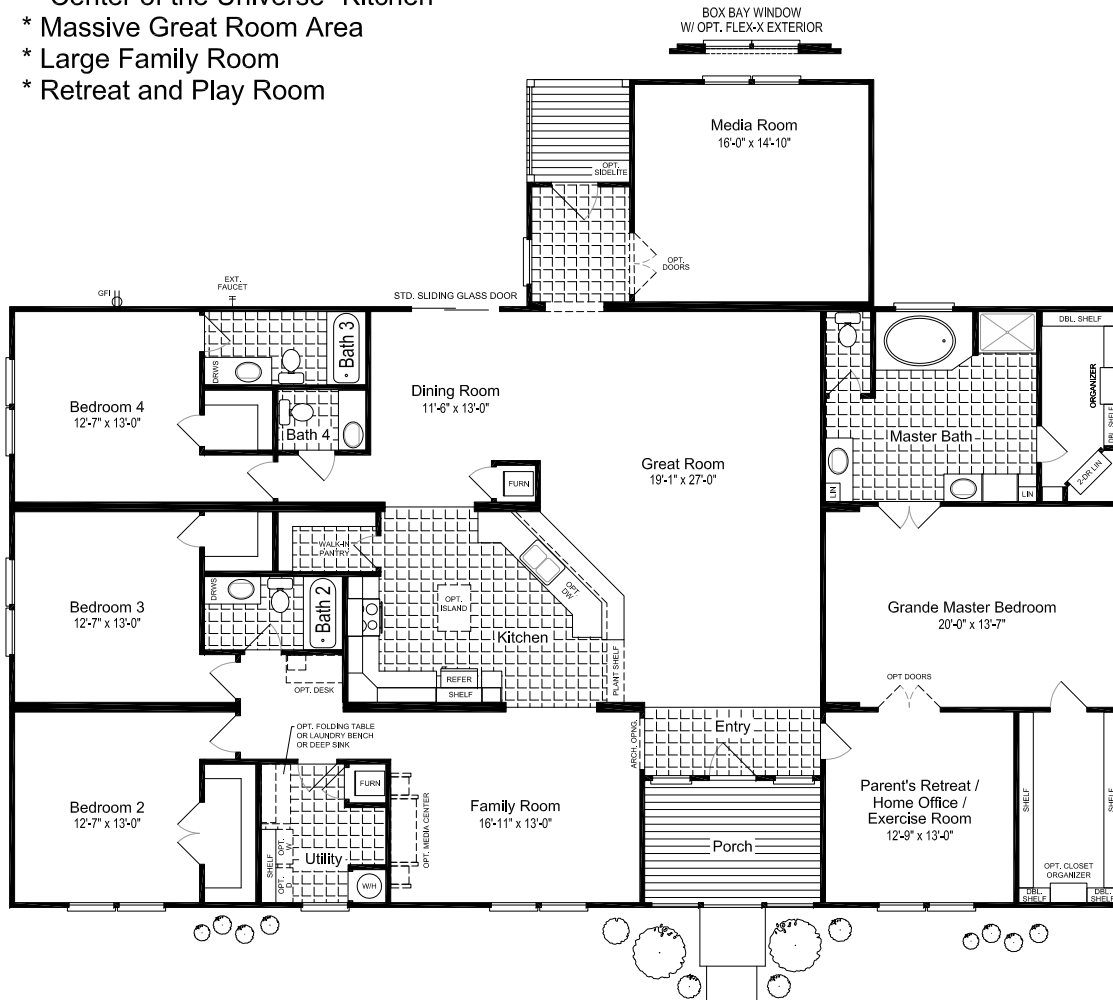
56'-6" x 76'-0"

4 Bedrooms / 3.5 Baths

Austin, Texas Date: 03/07/2018

Key Features:

- * Grande Master Suite
- * Full Soaker Tub and 48" Shower
- * Covered Porch and Entrance
- * "Center of the Universe" Kitchen
- * Massive Great Room Area
- * Large Family Room
- * Retreat and Play Room



Because Palm Harbor Homes has a continuous product updating and improvement process, specifications are subject to change without notice or obligation. Likewise, the floor plan shown is representative only and may vary from the actual home. Square footage calculations are based on nominal widths and all room dimensions are approximate subject to industry standards. R-values may vary in compressed areas. Some transportation components may have been recycled after close inspection for safety and appearance.

Copyright © 2019 by Palm Harbor Homes, Inc.
All Rights Reserved.



The "HACIENDA III FLEX" w/ Opt. Study / Library

Model: 320VR57764A

Add "M" to model # for MOD

3284 Square feet

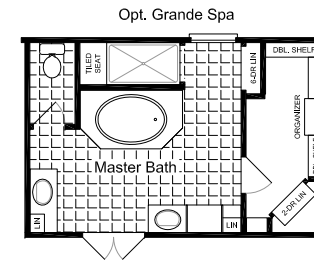
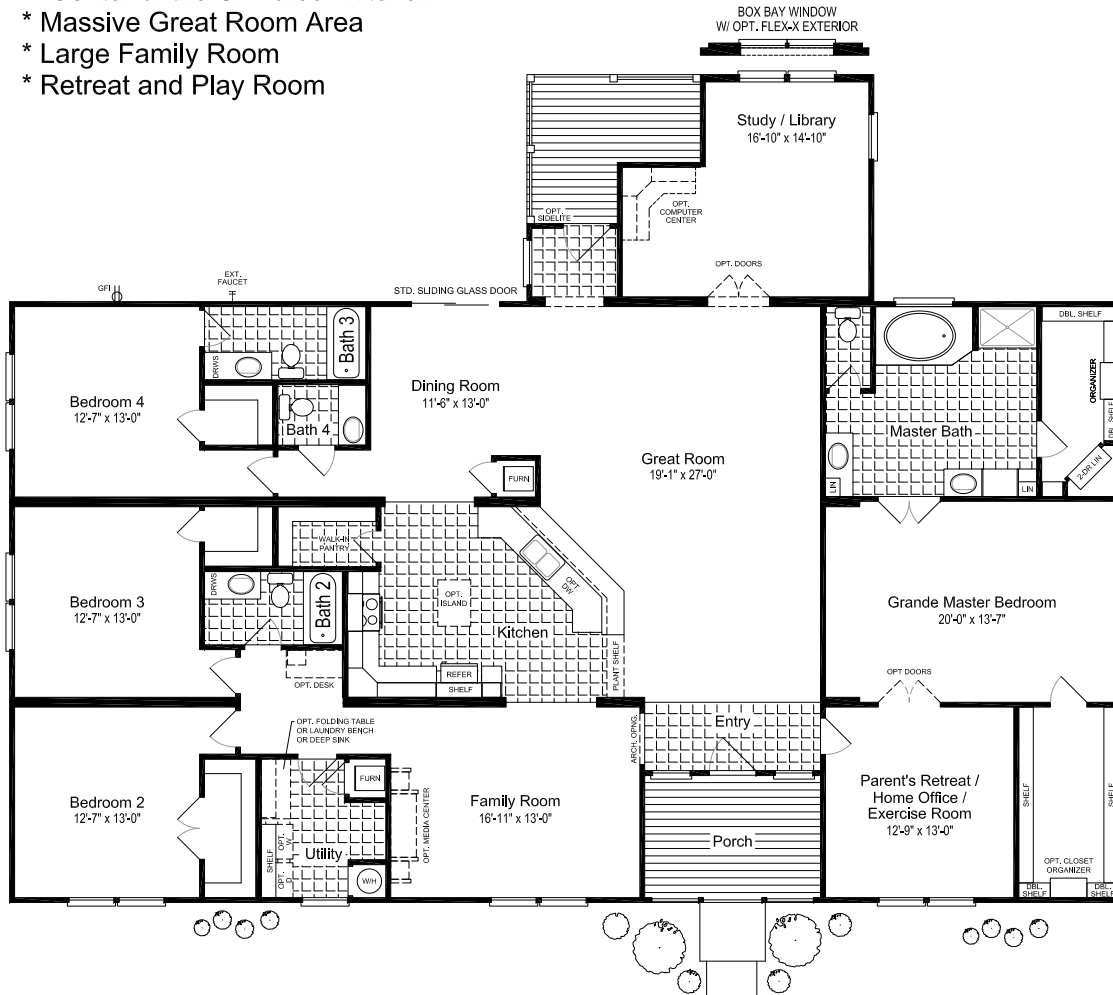
56'-6" x 76'-0"

4 Bedrooms / 3.5 Baths

Austin, Texas Date: 03/07/2018

Key Features:

- * Grande Master Suite
- * Full Soaker Tub and 48" Shower
- * Covered Porch and Entrance
- * "Center of the Universe" Kitchen
- * Massive Great Room Area
- * Large Family Room
- * Retreat and Play Room



Because Palm Harbor Homes has a continuous product updating and improvement process, specifications are subject to change without notice or obligation. Likewise, the floor plan shown is representative only and may vary from the actual home. Square footage calculations are based on nominal widths and all room dimensions are approximate subject to industry standards. R-values may vary in compressed areas. Some transportation components may have been recycled after close inspection for safety and appearance.

Copyright © 2019 by Palm Harbor Homes, Inc.
All Rights Reserved.

