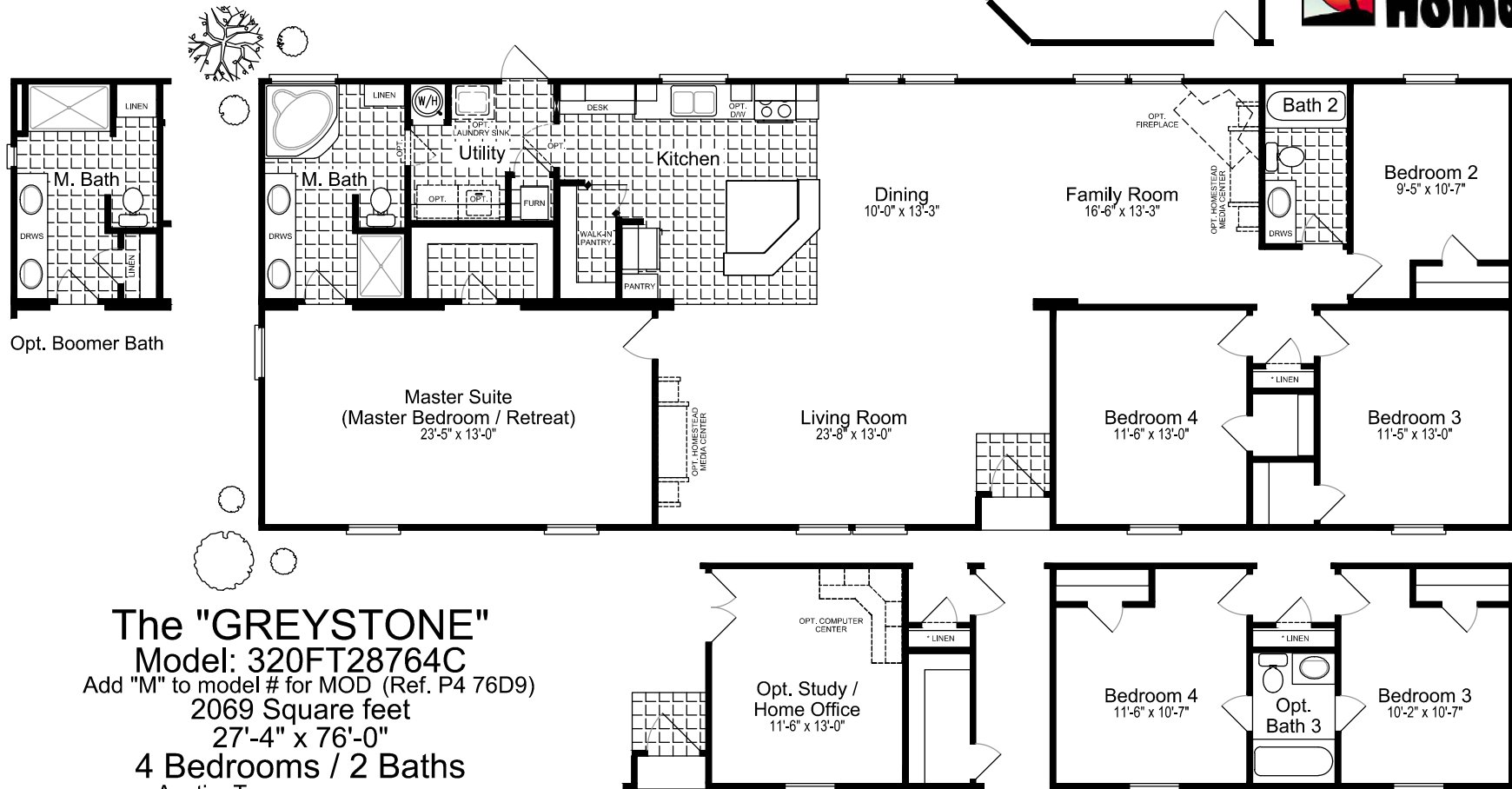


# Fiesta SERIES



NOTE: (\* LINEN) = ON MODULAR ONLY  
LINEN BECOMES PLENUM  
FOR OH DUCT. OPT.



**The "GREYSTONE"**  
**Model: 320FT28764C**  
 Add "M" to model # for MOD (Ref. P4 76D9)  
 2069 Square feet  
 27'-4" x 76'-0"  
**4 Bedrooms / 2 Baths**  
 Austin, Texas Date: 01/05/2015

Copyright © 2015 by Palm Harbor Homes, Inc.  
 All Rights Reserved.

## Key Features:

- \* Quick-Step Kitchen
- \* Walk-in Kitchen Pantry
- \* Grande Island w/ Serving Bar
- \* Drawers in Guest Bath
- \* Walk-in Closet - Mbr, Bdrm 3 & Bdrm 4
- \* Huge Master Suite
- \* 6-Door Linen Cabinet - Master Bath

Because Palm Harbor Homes has a continuous product updating and improvement process, specifications are subject to change without notice or obligation. Likewise, the floor plan shown is representative only and may vary from the actual home. Square footage calculations are based on nominal widths and all room dimensions are approximate subject to industry standards. R-values may vary in compressed areas. Some transportation components may have been recycled after close inspection for safety and appearance.

# Fiesta

SERIES



STANDARD FIESTA EXTERIOR



OPTIONAL ESTATE EXTERIOR

The "GREYSTONE"  
Model: 320FT28764C  
Austin, Texas    Date: 01/05/2015

Because Palm Harbor Homes has a continuous product updating and improvement process, specifications are subject to change without notice or obligation. Likewise, the floor plan shown is representative only and may vary from the actual home. Square footage calculations are based on nominal widths and all room dimensions are approximate subject to industry standards. R-values may vary in compressed areas. Some transportation components may have been recycled after close inspection for safety and appearance.

Copyright © 2015 by Palm Harbor Homes, Inc.  
All Rights Reserved.