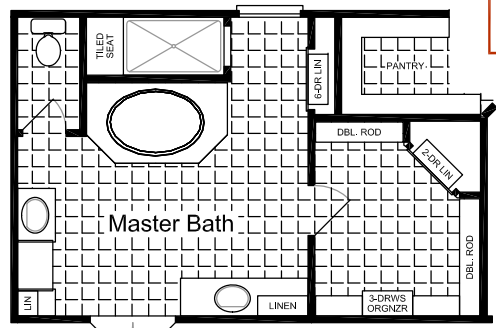


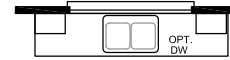
# Fiesta SERIES



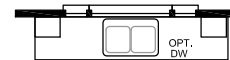
Copyright © 2015 by Palm Harbor Homes, Inc.  
All Rights Reserved.



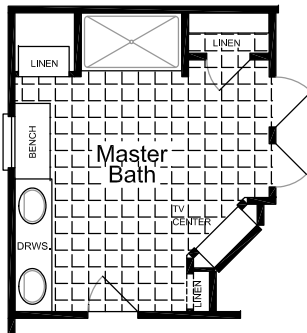
Opt. Grande Spa



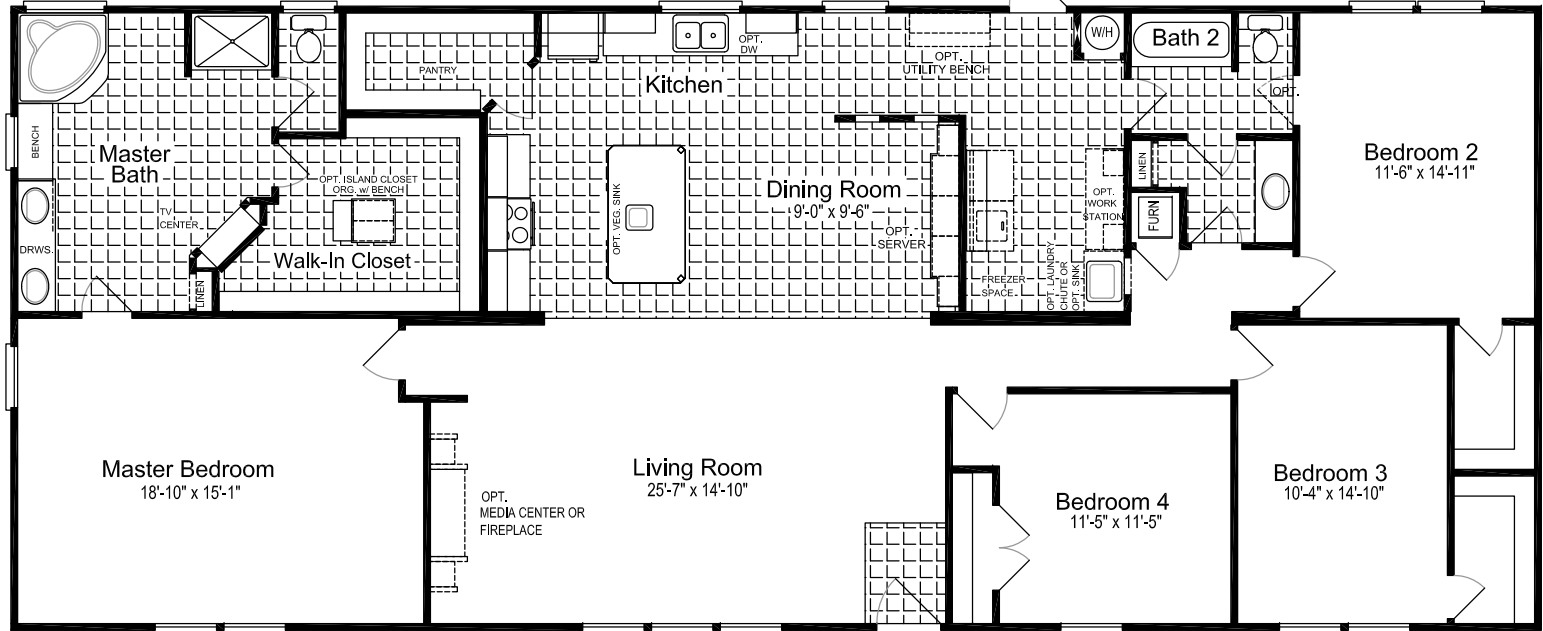
Opt. Picture Window  
AVAILABLE WITH VINYL LOW-E WINDOWS



Opt. Garden Window  
AVAILABLE WITH SINGLE PANE WINDOWS



Opt. Boomer Bath



## The "CANYON BAY II"

Model: 320FT32764C

Add "M" to model # for MOD (Ref. T4 76A5)

2356 Square feet

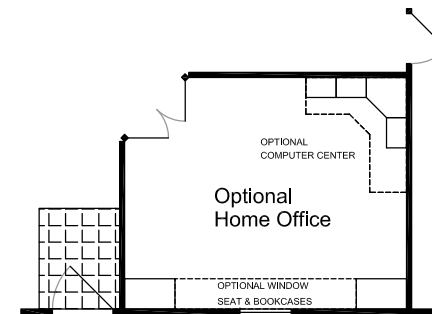
31'-0" x 76'-0"

4 Bedrooms / 2 Baths

Austin, Texas Date: 04/02/2015

### Key Features:

- \* Rear Country Kitchen
- \* Built-in Linens in Both Baths
- \* Spa Bench



Because Palm Harbor Homes has a continuous product updating and improvement process, specifications are subject to change without notice or obligation. Likewise, the floor plan shown is representative only and may vary from the actual home. Square footage calculations are based on nominal widths and all room dimensions are approximate subject to industry standards. R-values may vary in compressed areas. Some transportation components may have been recycled after close inspection for safety and appearance.

# Fiesta

SERIES



STANDARD FIESTA EXTERIOR



OPTIONAL ESTATE EXTERIOR



OPTIONAL HOMESTEAD EXTERIOR

Because Palm Harbor Homes has a continuous product updating and improvement process, specifications are subject to change without notice or obligation. Likewise, the floor plan shown is representative only and may vary from the actual home. Square footage calculations are based on nominal widths and all room dimensions are approximate subject to industry standards. R-values may vary in compressed areas. Some transportation components may have been recycled after close inspection for safety and appearance.

The "CANYON BAY II"  
Model: 320FT32764C  
Austin, Texas      Date: 01/05/2015

Copyright © 2015 by Palm Harbor Homes, Inc.  
All Rights Reserved.