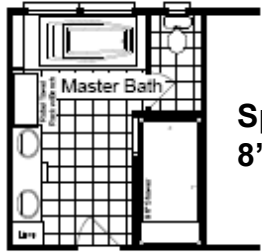
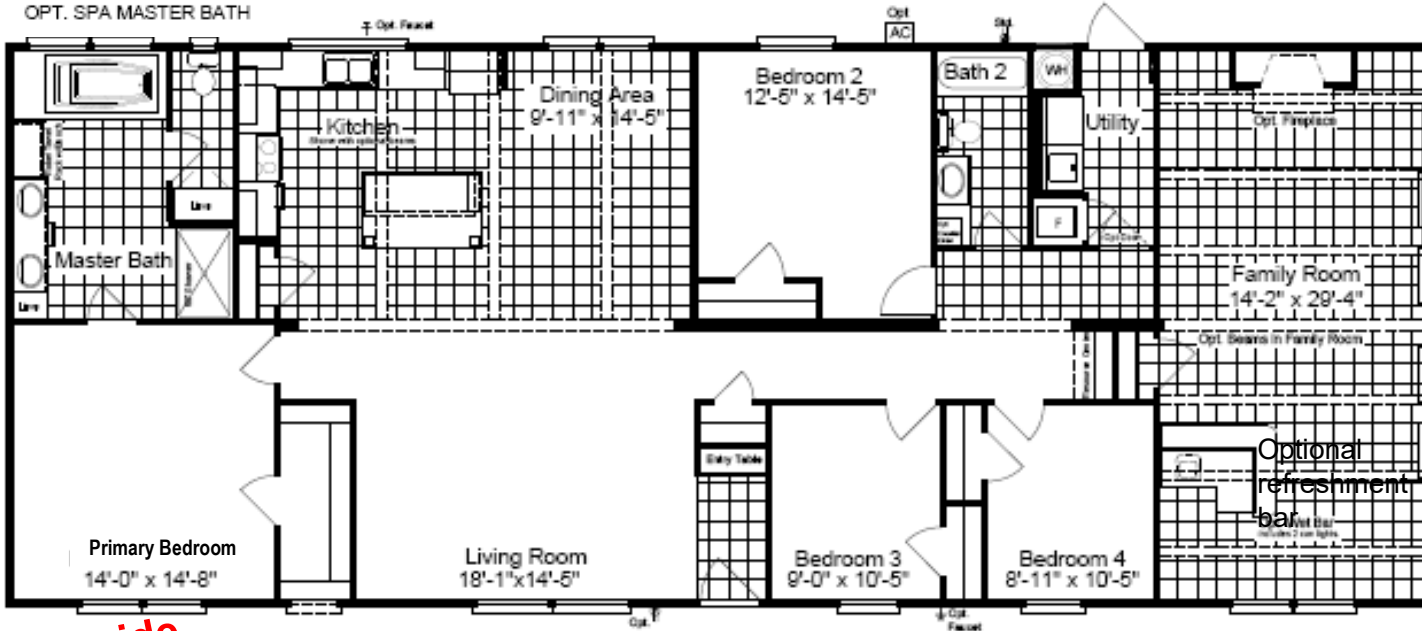


# The Carrington 76

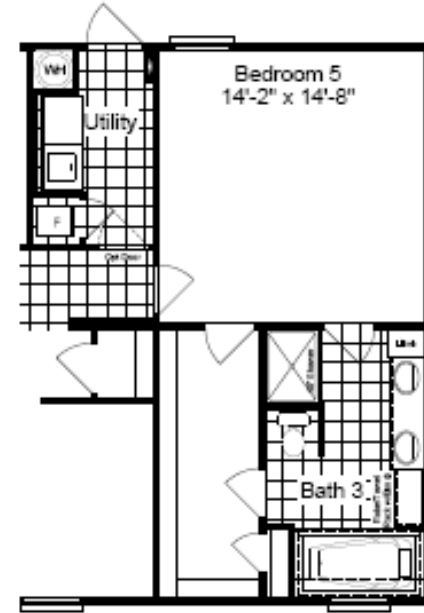


**Spa Bath Option:  
8' Shower in lieu of 5'**

OPT. SPA MASTER BATH



**30' wide**



OPT. SECOND MASTER BATH AND 5TH BEDROOM

**Model KH30764C**  
**4 Bedroom, 2 Bath**  
**2,280 sq. ft.**

330 Ft. Worth, TX. 7-21

- 8 1/2' Flat Ceilings Throughout
- Dual Pane Windows
- 60" Master Shower
- Large Island in Kitchen
- Barn Door
- 6' Slip Tub in Master
- Picture Window in Kitchen
- Game Room

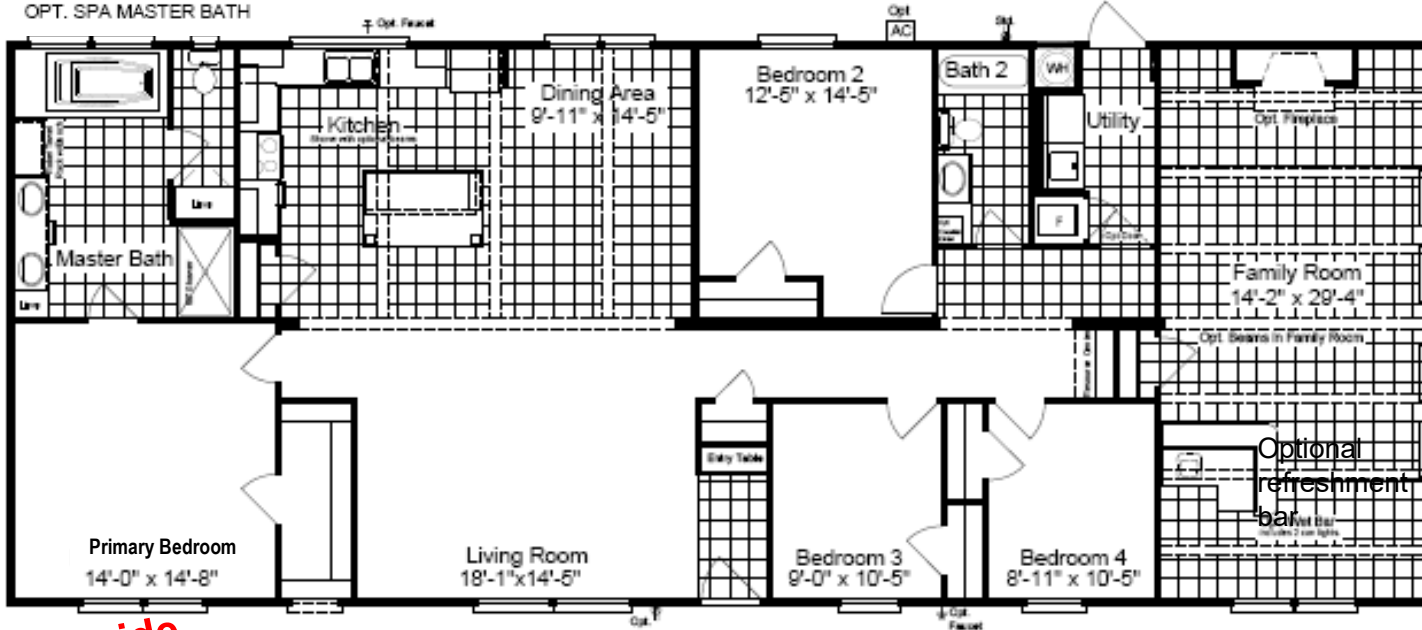
Copyright © Palm Harbor Homes, Inc. Because Palm Harbor Homes has a continuous product updating and improvement process, prices, plans, dimensions, features, materials, specifications and availability are subject to change without notice or obligation. Please refer to working drawings for actual dimensions. Renderings and floor plans are artist's depictions only and may vary from the completed home. Square footage calculations and room dimensions are approximate subject to industry standards. Rev. 3-20

# The Carrington 76

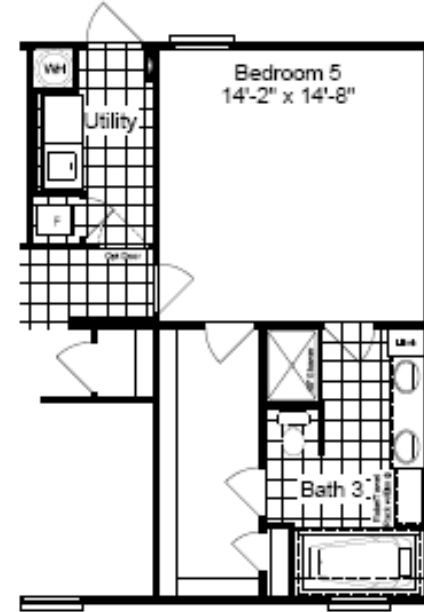


**Spa Bath Option:  
8' Shower in lieu of 5'**

OPT. SPA MASTER BATH



**30' wide**



OPT. SECOND MASTER BATH AND 5TH BEDROOM

**Model KH30764C**  
**4 Bedroom, 2 Bath**  
**2,280 sq. ft.**

330 Ft. Worth, TX. 7-21

- 8 1/2' Flat Ceilings Throughout
- Dual Pane Windows
- 60" Master Shower
- Large Island in Kitchen
- Barn Door
- 6' Slip Tub in Master
- Picture Window in Kitchen
- Game Room

Copyright © Palm Harbor Homes, Inc. Because Palm Harbor Homes has a continuous product updating and improvement process, prices, plans, dimensions, features, materials, specifications and availability are subject to change without notice or obligation. Please refer to working drawings for actual dimensions. Renderings and floor plans are artist's depictions only and may vary from the completed home. Square footage calculations and room dimensions are approximate subject to industry standards. Rev. 3-20