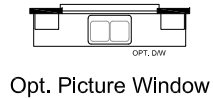
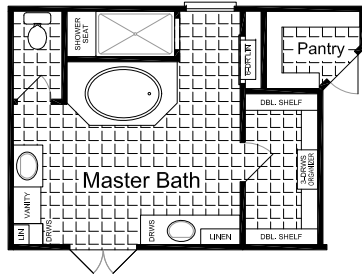


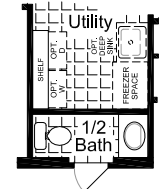
# Fiesta SERIES



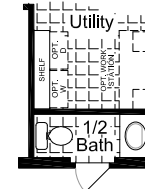
Opt. Grande Spa



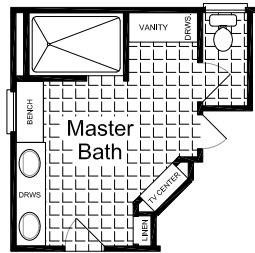
Opt. Picture Window



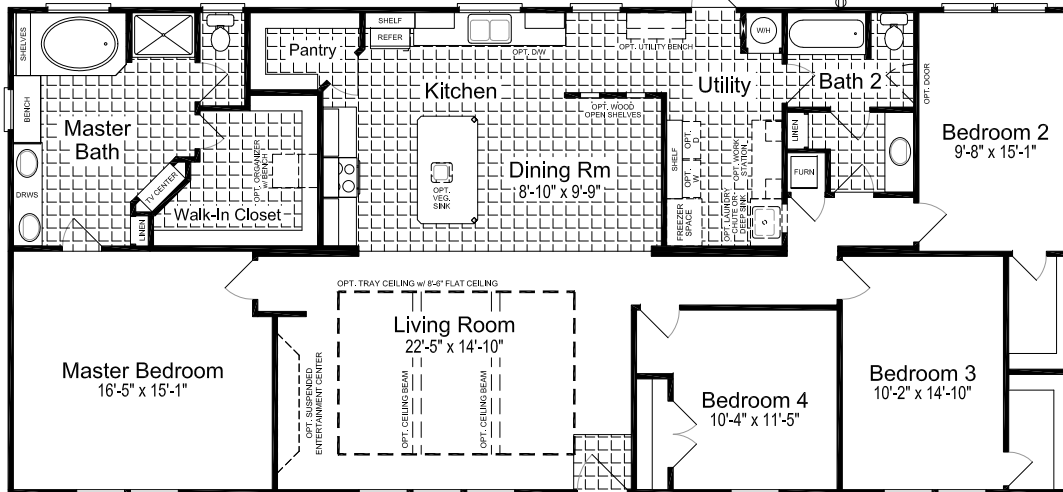
Opt. 1/2 Bath  
Shown w/  
Freezer  
Space &  
Opt. Deep  
Sink



Opt. 1/2 Bath  
Shown w/  
Opt. Work  
Station



Opt. Infinity Spa



## The "CANYON BAY I"

Model: 320FT32684A

Add "M" to model # for MOD

2108 Square feet

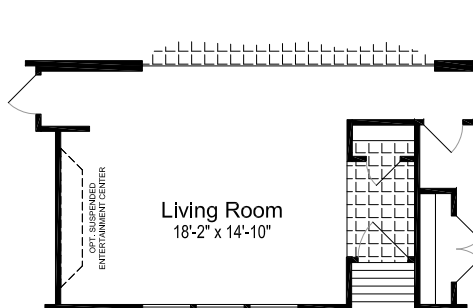
31'-0" x 68'-0"

4 Bedrooms / 2 Baths

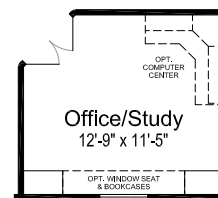
Austin, Texas Date: 09/16/2019

### Key Features:

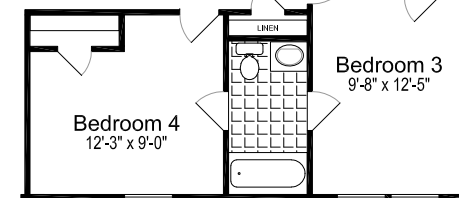
- \* Rear Country Kitchen
- \* Built-in Linens in Both Baths
- \* Spa Bench



Opt. Foyer w/ Recessed Entry  
(N/A w/ OPT. TRAY CEILING)



Opt. Home Office/Study  
(N/A w/ OPT. FOYER w/ RECESSED ENTRY)



Opt. Jack & Jill Bath

Because Palm Harbor Homes has a continuous product updating and improvement process, specifications are subject to change without notice or obligation. Likewise, the floor plan shown is representative only and may vary from the actual home. Square footage calculations are based on nominal widths and all room dimensions are approximate subject to industry standards. R-values may vary in compressed areas. Some transportation components may have been recycled after close inspection for safety and appearance.