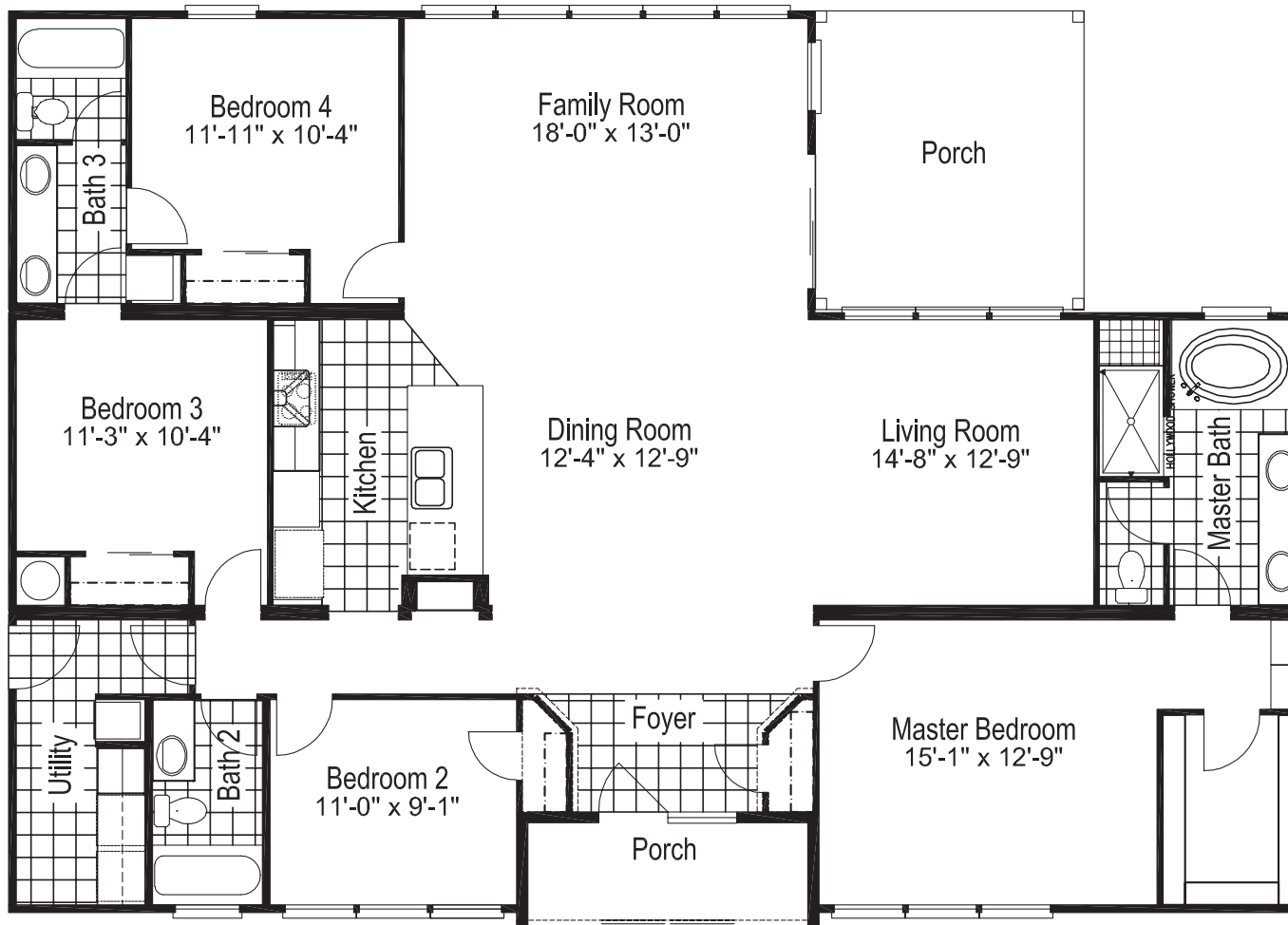




www.palmharbor.com



# THE EXTREME HOME III



## Extreme Home III

58D3

Approx. 1,988 Sq. Ft.  
4 Bedrooms, 3 Baths

- Modern exterior blends with natural settings
- Spacious open living area
- Recessed front porch area
- Abundant windows and natural light
- Entry closet

Copyright © 2010, Palm Harbor Homes, Inc. Because Palm Harbor Homes has a continuous product updating and improvement process, prices, plans, dimensions, features, materials, specifications and availability are subject to change without notice or obligation. Please refer to working drawings for actual dimensions. Renderings and floor plans are artist's depictions only and may vary from the completed home. Square footage calculations and room dimensions are approximate subject to industry standards.



www.palmharbor.com



# THE EXTREME HOME III



Modular Elevation Shown Above .  
Rock work shown here is a field-installed option. Garage not included.



Elevation 2 - Garage not included.

## Extreme Home III

58D3

Approx. 1,988 Sq. Ft.  
4 Bedrooms, 3 Baths

- Modern exterior blends with natural settings
- Recessed front porch area
- Entry closet
- Spacious open living area
- Abundant windows and natural light

Copyright © 2010, Palm Harbor Homes, Inc. Because Palm Harbor Homes has a continuous product updating and improvement process, prices, plans, dimensions, features, materials, specifications and availability are subject to change without notice or obligation. Please refer to working drawings for actual dimensions. Renderings and floor plans are artist's depictions only and may vary from the completed home. Square footage calculations and room dimensions are approximate subject to industry standards.